

A large-scale interactive art installation is shown at night. The structure consists of a dense network of blue metal frames, resembling chairs or stools, interconnected by thin wires. Several vertical purple neon tubes are integrated into the structure, providing a vibrant glow. People are seen interacting with the installation, some holding onto the frames. The scene is set outdoors, with a dark background and some ambient lighting from the installation itself.

dashboard





**MALDAVER
CO. INC.**

VER CO. INC.

6601

6601











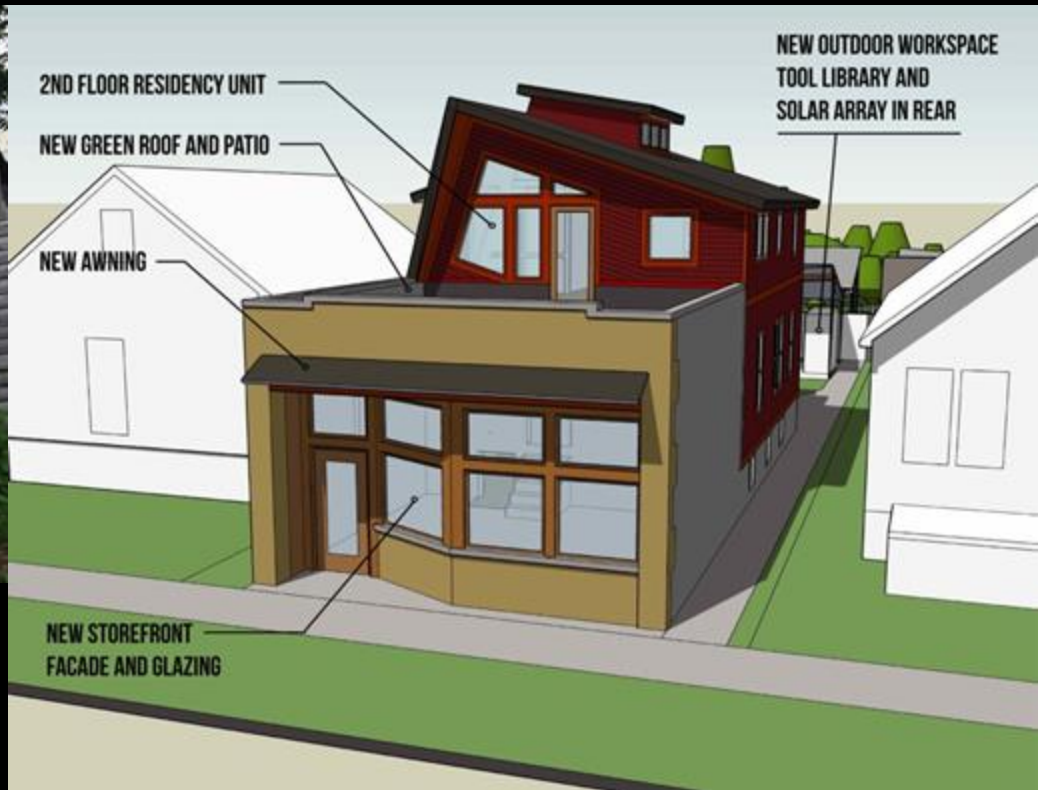




Paper Machine, Lower Ninth, New Orleans



Pops Emporium, Hamtramck, MI

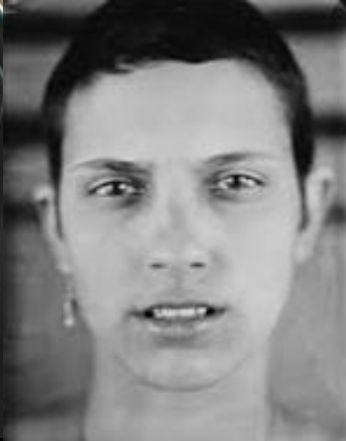


Nicholson Project, Ward 7, Washington D.C.



Kress on Dexter, Montgomery, AL





Locals should have a say/action in what's being made in their place

Produce your thing, set stewards up for success, then get outta the way.

Be reflective and nimble.