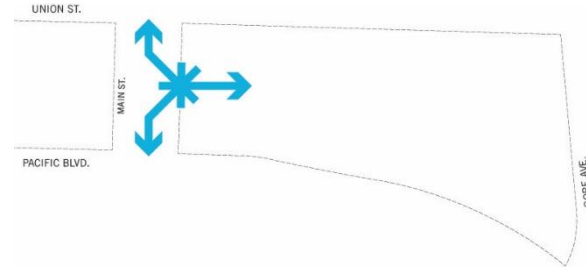


PROCESS RECAP – PREVAILING DESIGN THEMES

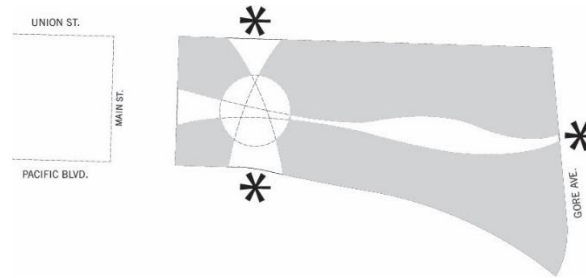
MAIN STREET CULTURAL CENTER

All groups identified Main Street as the location for a Cultural Centre because of its visibility and connectivity. The Main Street location should have a clear presence on the Alley, and act as a passage/connection into the Alley as part of how the centre is organized and designed. In either an abstract or literal ways, this passage should tell a story and also be a welcoming, celebratory gateway.



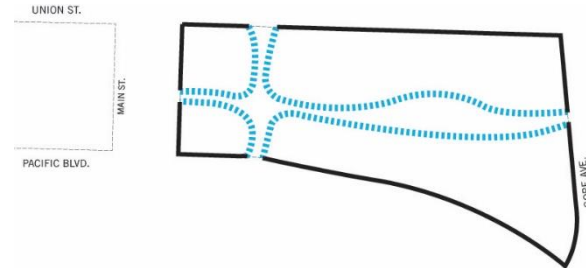
ORGANIC GEOMETRY

The new Hogan's Alley need not be the rectilinear 'T' form of the original subdivision, but the three historic entry points are important and should be maintained. The Alley can be more organic, rhythmic, curvilinear in its path, and/or incorporate geometry of the circle that reflects more African influence.



INTERIOR/EXTERIOR

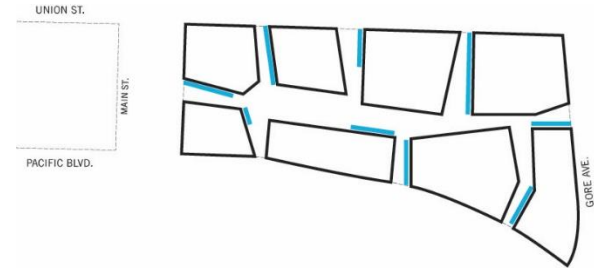
The character, scale, personality and overall experience of the new Alley internal to the block should be a different experience than the outside of the block. This block interior should be a focus of life, small scale local businesses, music, oasis, a safe place and community.



PROCESS RECAP – PREVAILING DESIGN THEMES

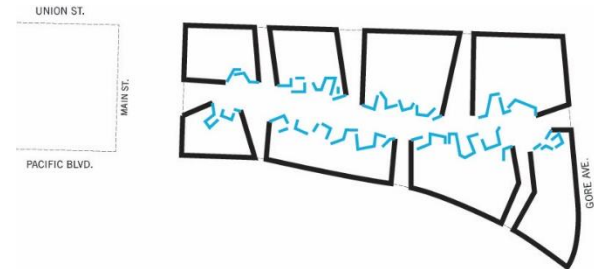
PASSAGES + STORY TELLING

Passages connect from the streets outside to the Alley and are an opportunity for story telling. Can be powerful moments of transition.



SPACE FOR SOCIAL CONNECTIONS

The overall spatial configuration of the block including individual buildings and open spaces between buildings should be designed around social connections – porches, terraces, rooftops and building forms that support social life and connection; a range of scale of spaces for a variety of activities; glimpses of life within .



Porches, Passages and Thresholds

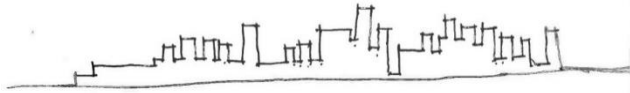
The front porch plays a vital role in the life of a community. Porches are where communities happen. Children play, friends meet to hang out and share stories. The porch is where we make introductions and take Sunday photos. It is not quite public and not completely private. The porch is a place in-between the very public life of the street and the very private life of the family.

This 'place in-between' is like no other. So too is Hogan's Alley. It resides in-between Vancouver's past and its future; a physical place that was destroyed but is still a flourishing, strong-knit community. The new Hogan's Alley will be a place for community to come together and thrive. It will welcome those in Vancouver and those from afar, particularly those with no other porch to shelter them.

The porches of Hogan's Alley will become those places between the intimate life of a tightknit community and their welcoming acts of kindness offering shelter to strangers. They will be places for friends to gather, sharing stories and facing challenges together. High and low, large and small, the porches of Hogan's Alley will embody the spirit of the community past and present and will honour those values that make it strong.



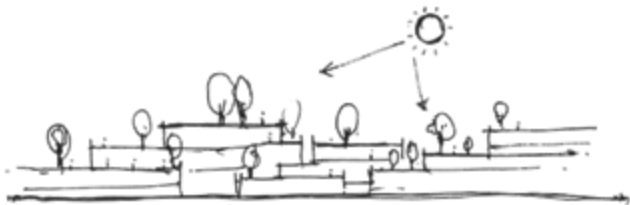
Porches, Passages and Thresholds



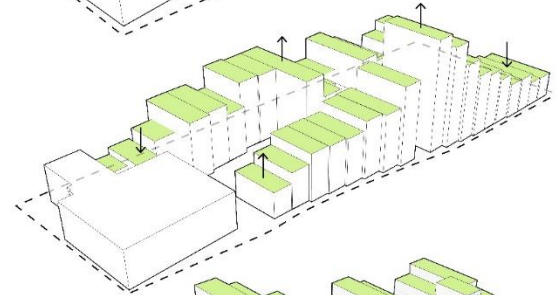
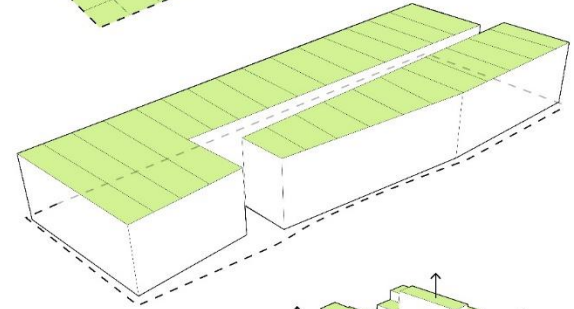
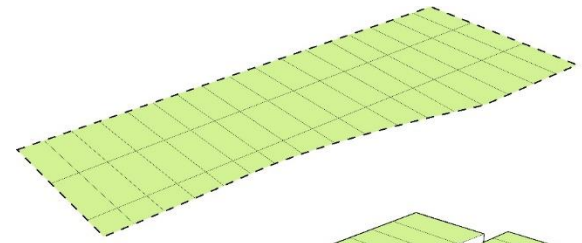
Vancouver Skyline



Mountains



Porch



DESIGN UPDATE – First Sketches



Porches, Passages and Thresholds



DESIGN UPDATE – Main Street Experience



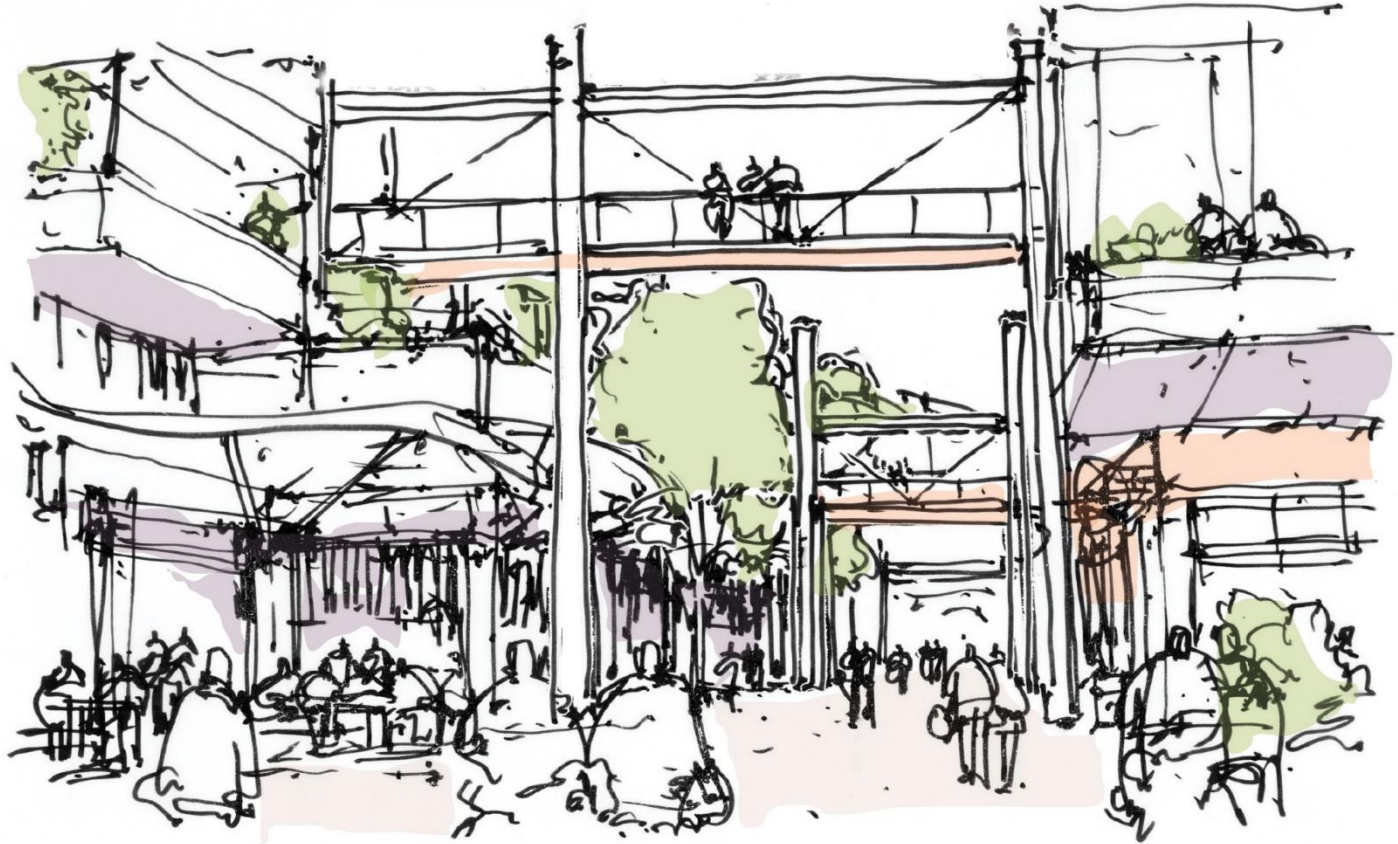
DESIGN UPDATE – Plaza from Main Street Experience



DESIGN UPDATE – “Welcoming Point” with Public Art/Memorial



DESIGN UPDATE – Experience in the Alley



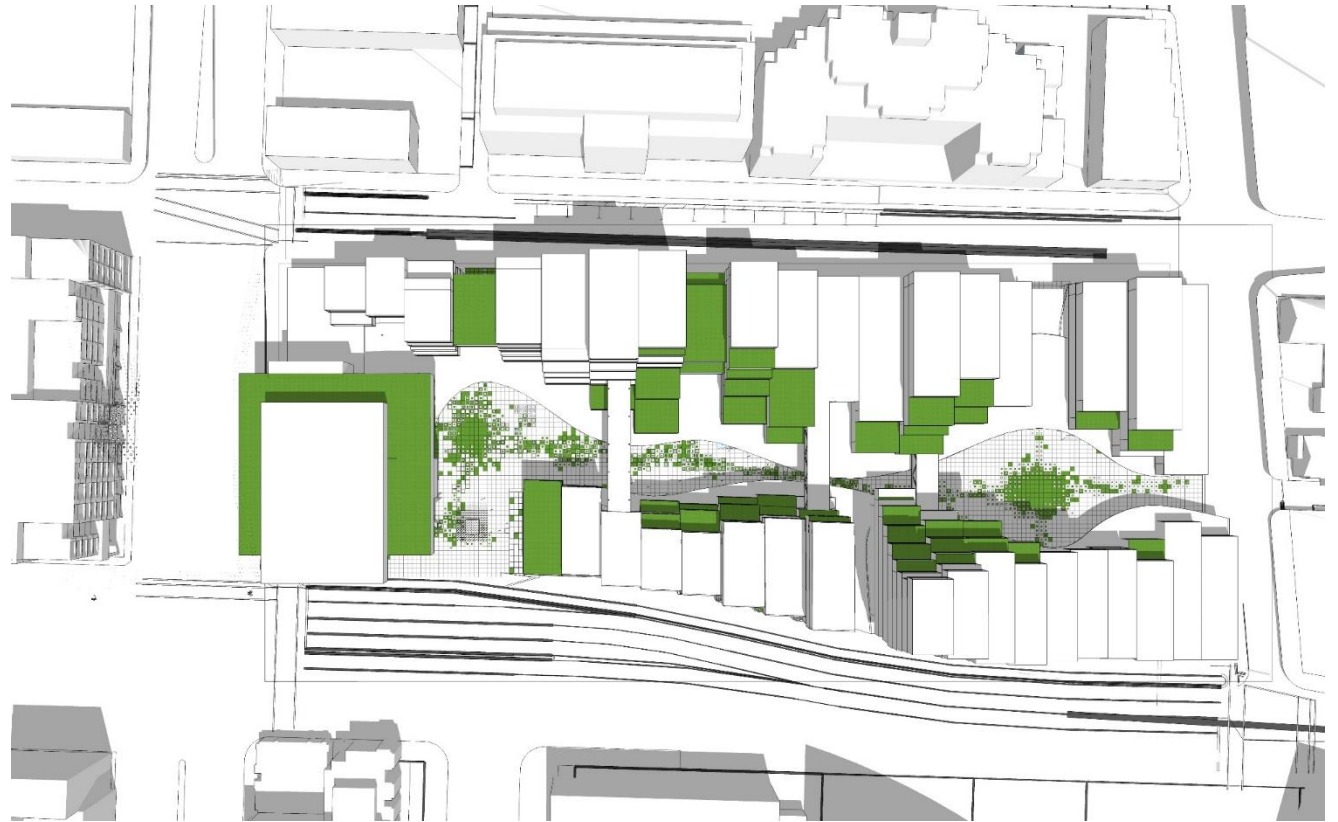
DESIGN UPDATE – Marketplace Experience



DESIGN UPDATE – Progress



DESIGN UPDATE – Birdseye



“Welcoming Point” with Public Art/Memorial for the new Hogan’s Alley



Experience in the new Hogan's Alley



Experience in the new Hogan's Alley

