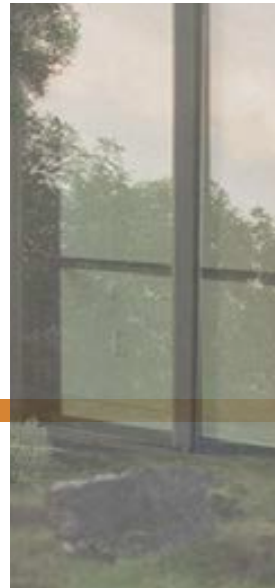
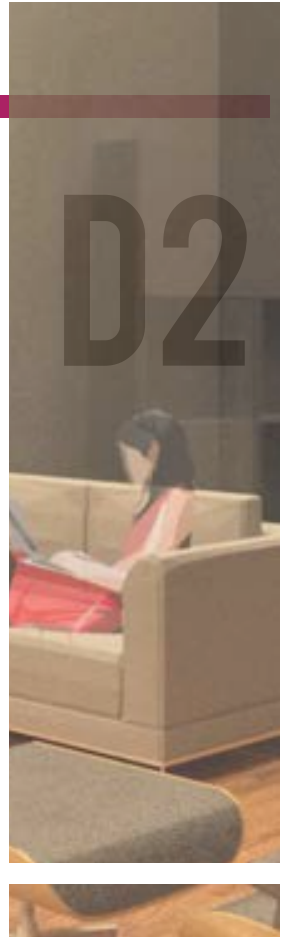
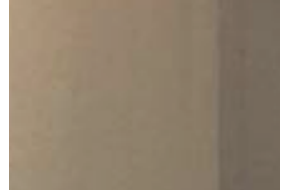
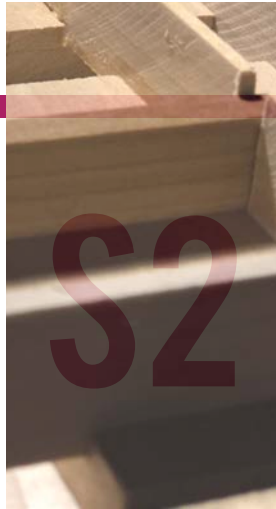
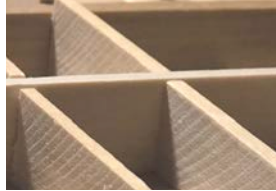
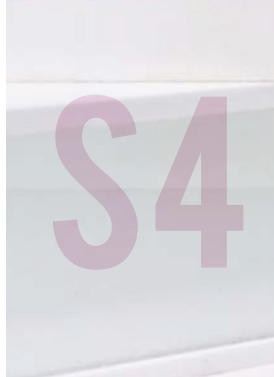
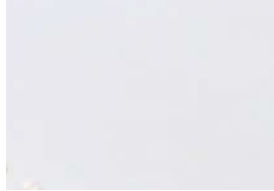




21

ARCHITECTURE  
PORTFOLIO





# PORTFOLIO CONTENTS

## YEAR 1

Studio 01 (S1) 06

2D/3D Drawings

Studio 02 (S2) 16

Material Exploration | **Horizontal Connections**

Exploratory Design Process of a Folly | **Alla Vista**

## DESIGN COMMUNICATIONS

DeCom 01 (D1) 26

Rhinoceros | **Vivood Landscape Hotel Case Study**

DeCom 02 (D2) 28

Revit | Photoshop | **Eames House Case Study**

## YEAR 2

Studio 03 (S3) 32

Conceptual Design | Form Development | **NoiseGround Pavilion**

Mixed Use Art Gallery | Studio | **INEX**

Studio 04 (S4) 46

Precedent Analysis | Diagramming | **Richard Meier's Smith House**

Single Family Residence | **Mui Haus**



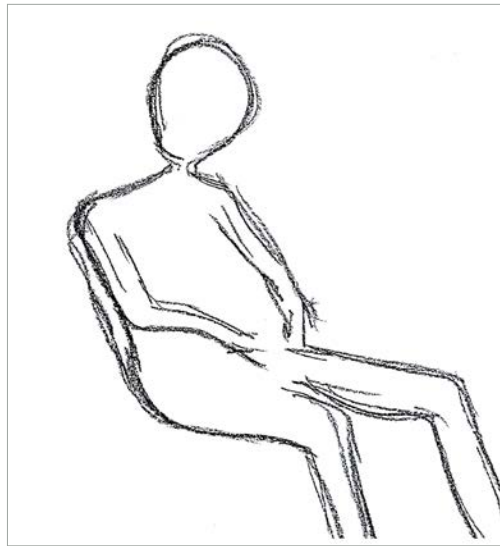
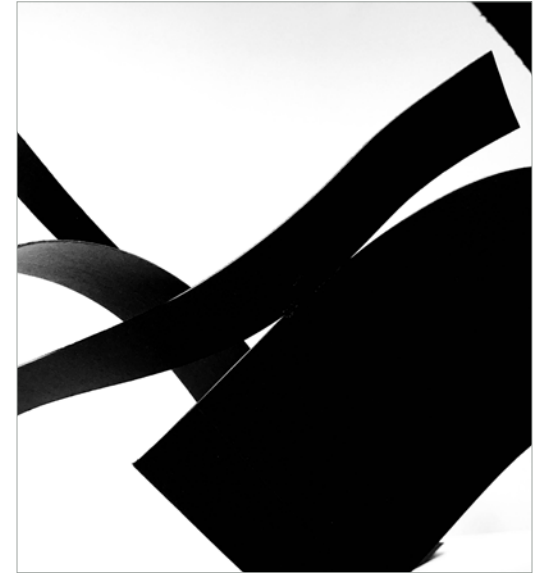
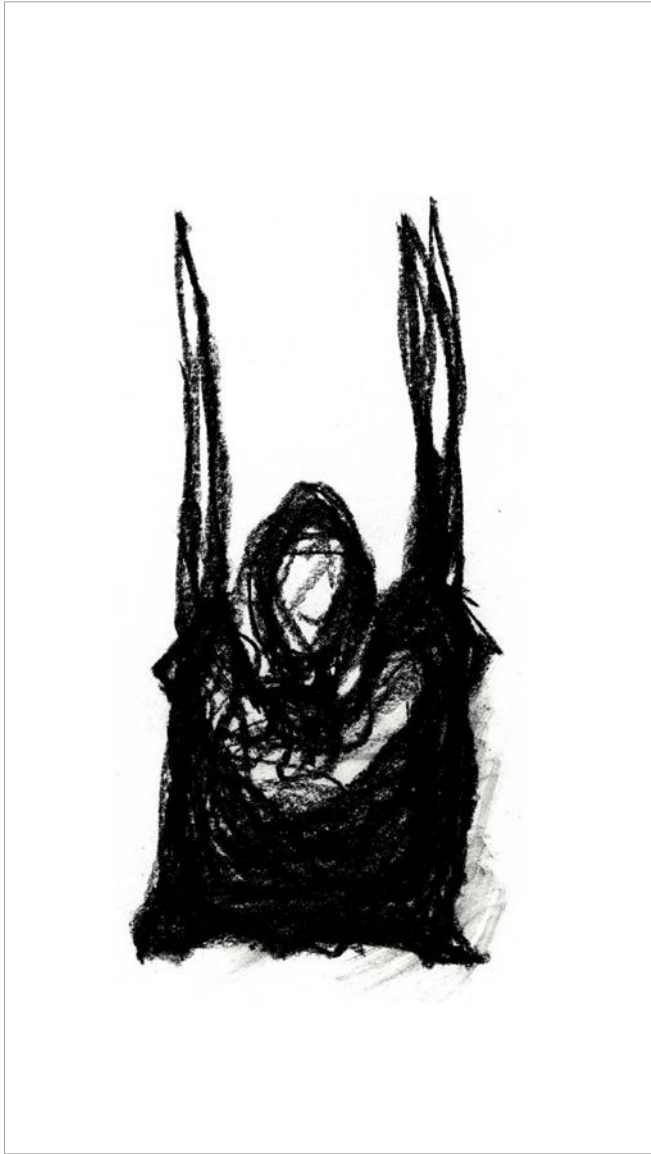
S1



---

## STUDIO 01

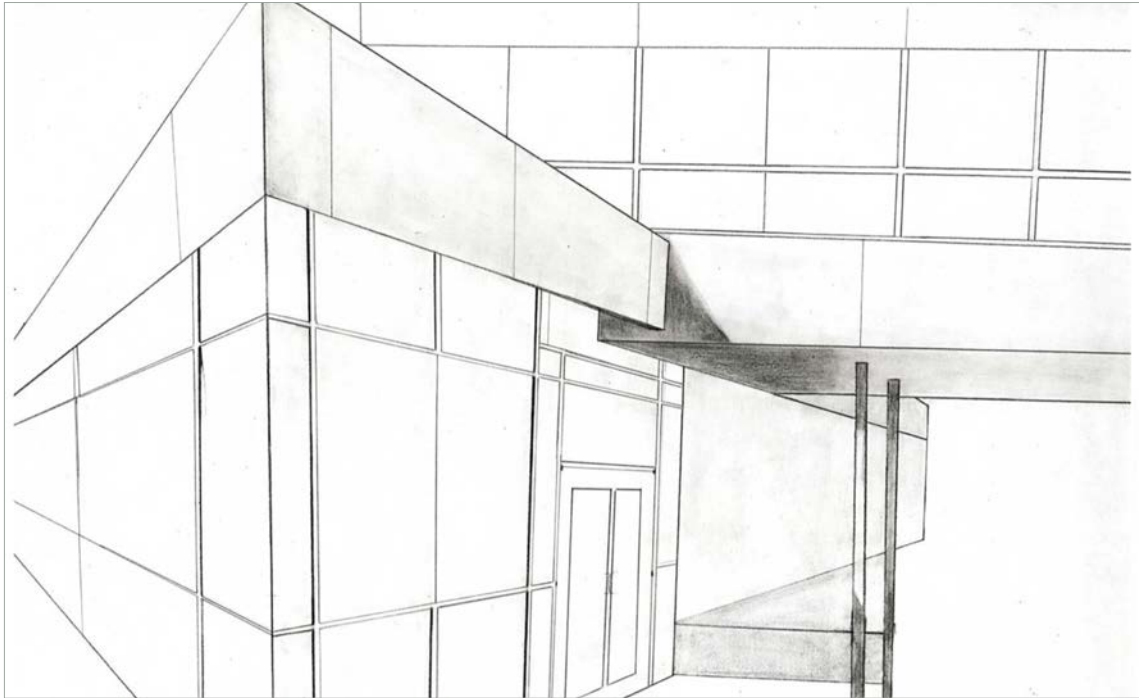
The studio introduced the fundamentals of hand drafted orthographic projections to parallel drawings. Starting from gestural charcoal drawings to perspective drawings and then to technical plans, the understanding of scale, proportion and order was established.



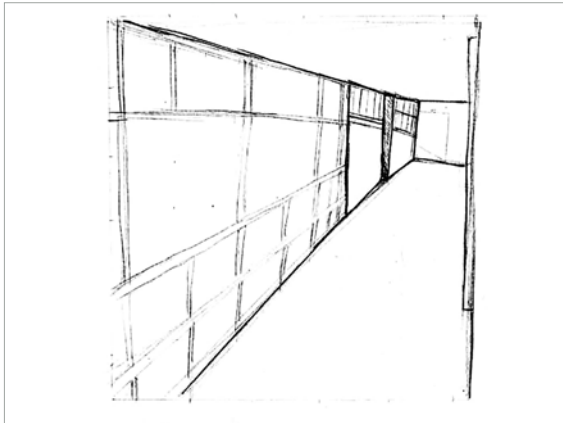
Charcoal gesture drawings of the human body in mass and contour exploring the spatial qualities of the form.



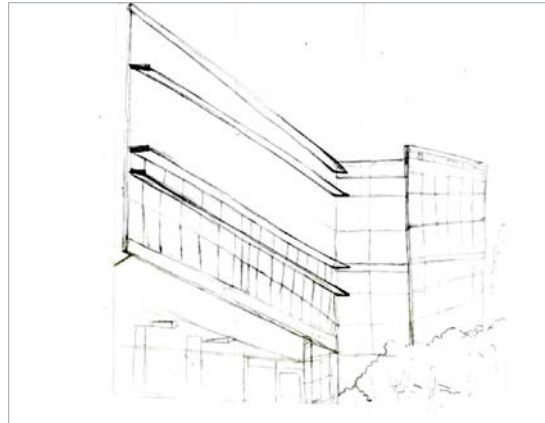
Texture development on poplar wood. The exercise explored the adaptability of the material as well as the informed use of the micro-motor tool.



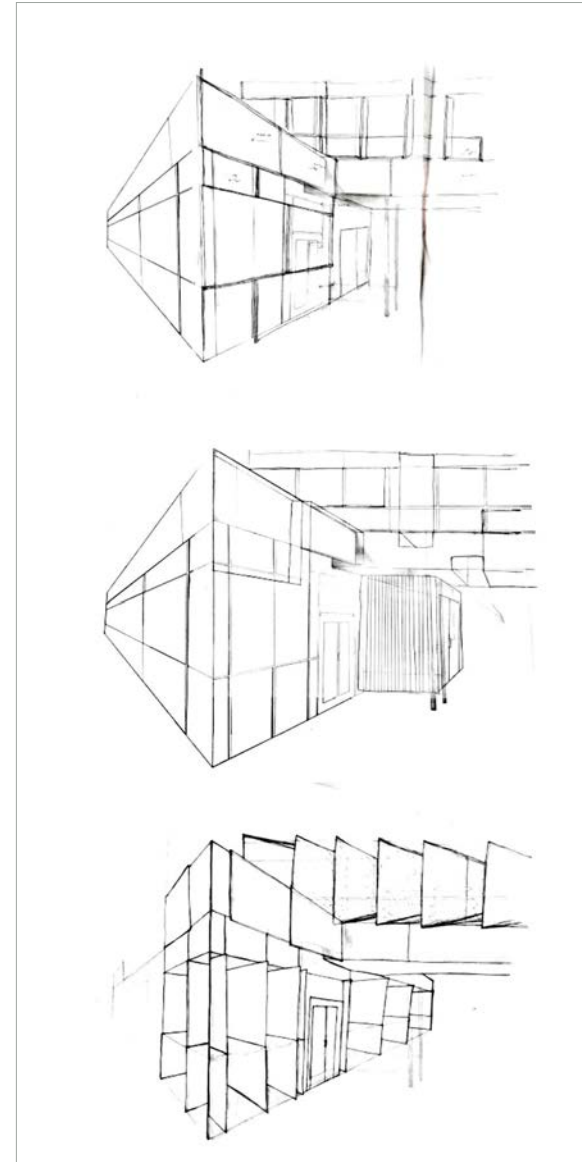
D2 Back Entrance



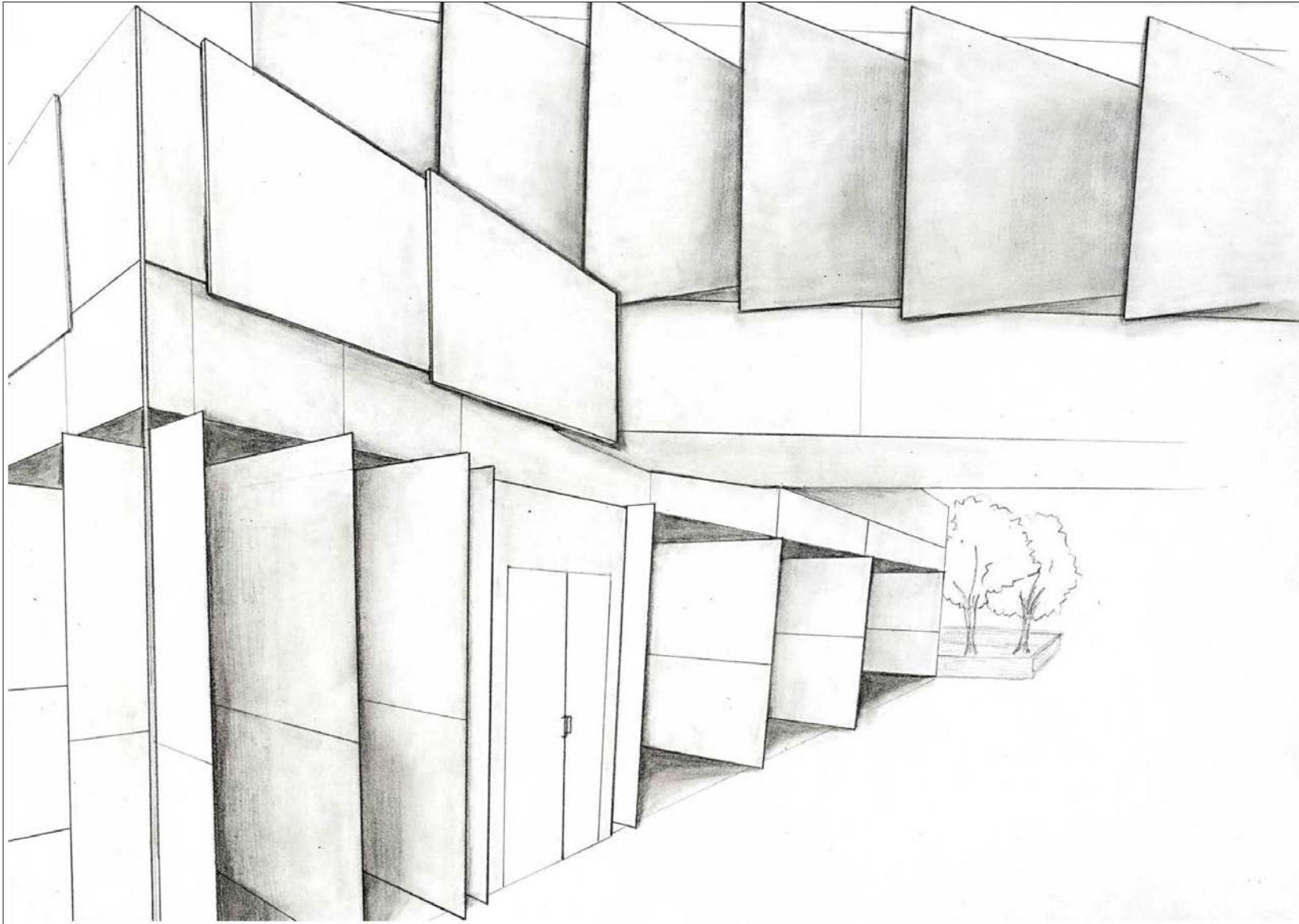
D2 Hallway



N Building

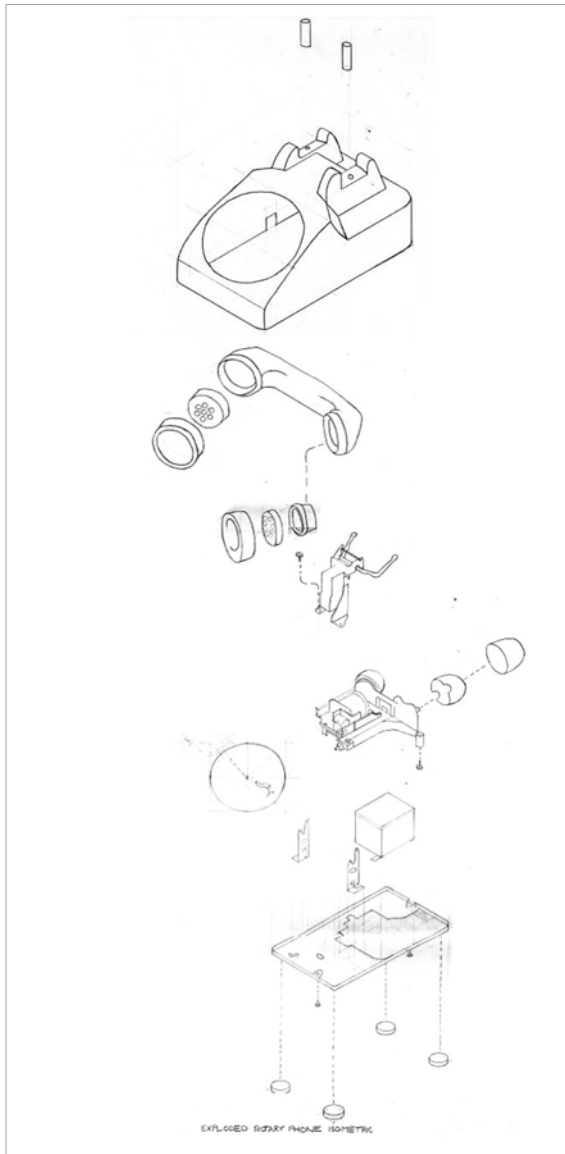


Iterative conceptual sketches for alteration design to an existing building.

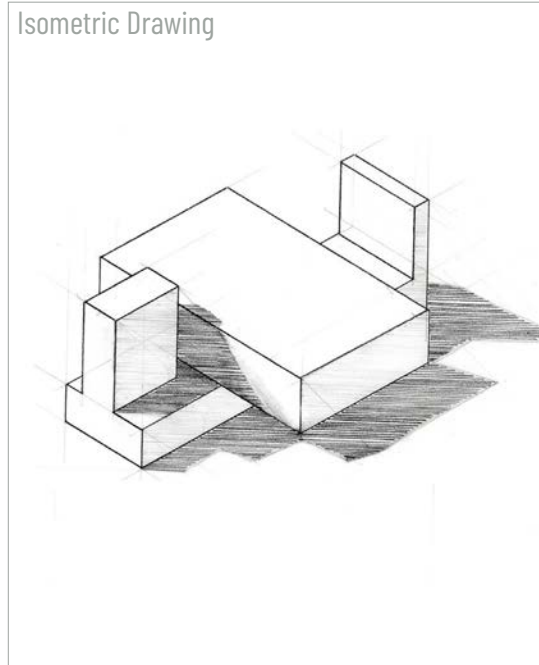


Final two point perspective drawing of alteration addition to D2 back entrance.

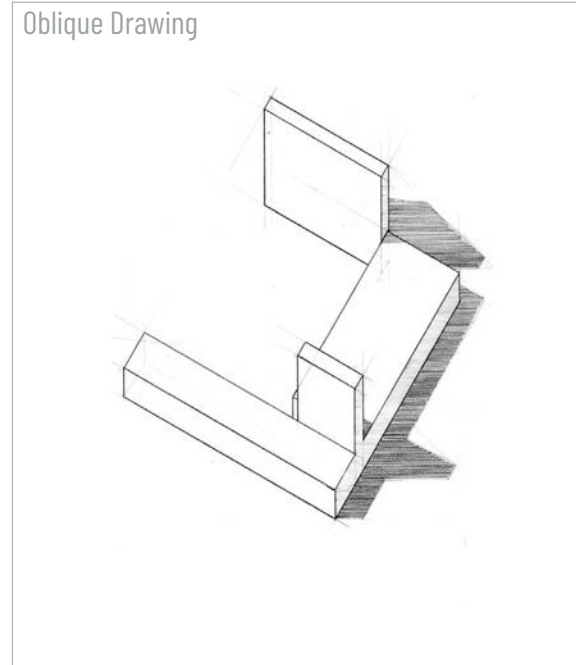




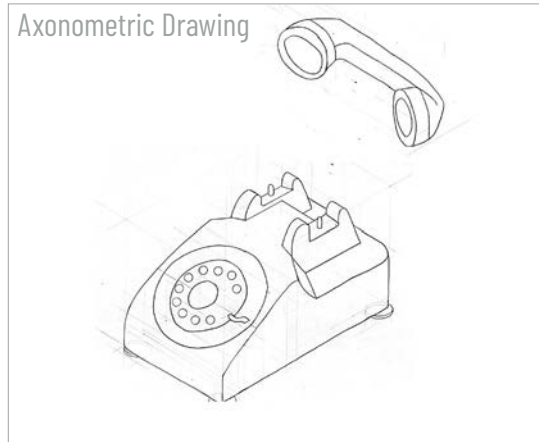
Isometric Drawing



Oblique Drawing



Axonometric Drawing

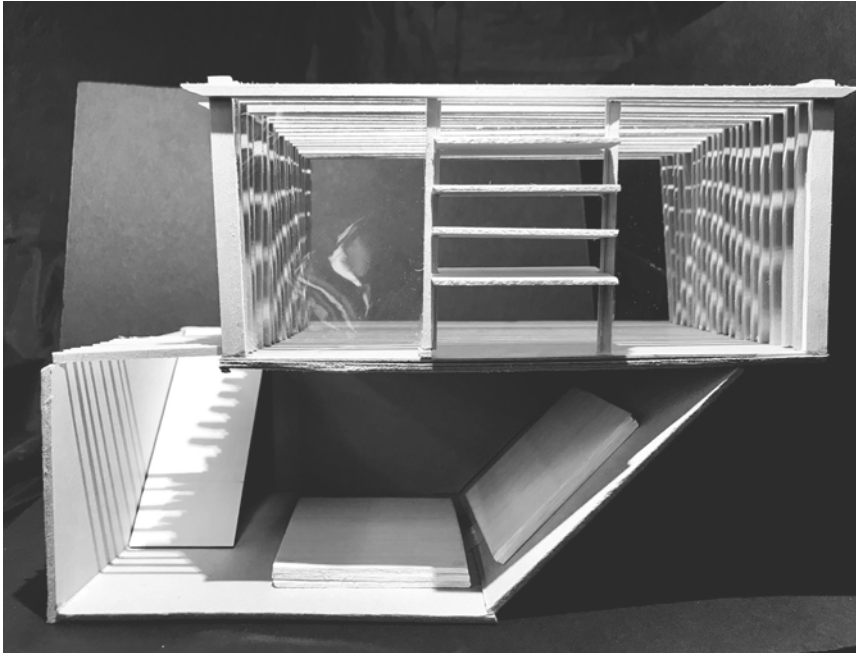


This exercise established the fundamental understanding of drawing types; orthographic and paraline drawings.

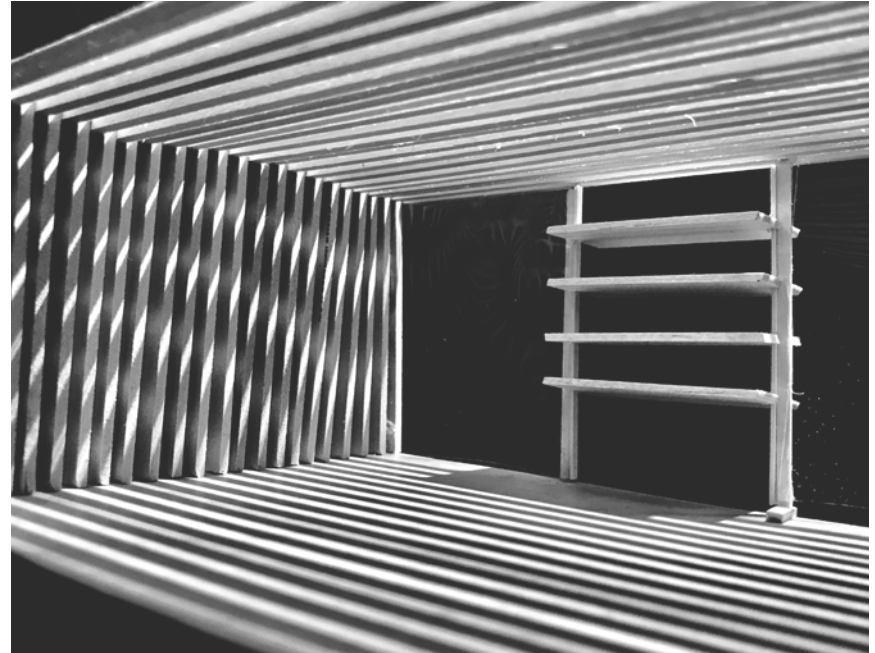
Once dismantled, the object included various internal pieces, the objective organization of each piece and its function was critical as was the geometric order, modules and proportion. From that, the development of an inhabitable space derived from the existing form of the rotary phone exercise.



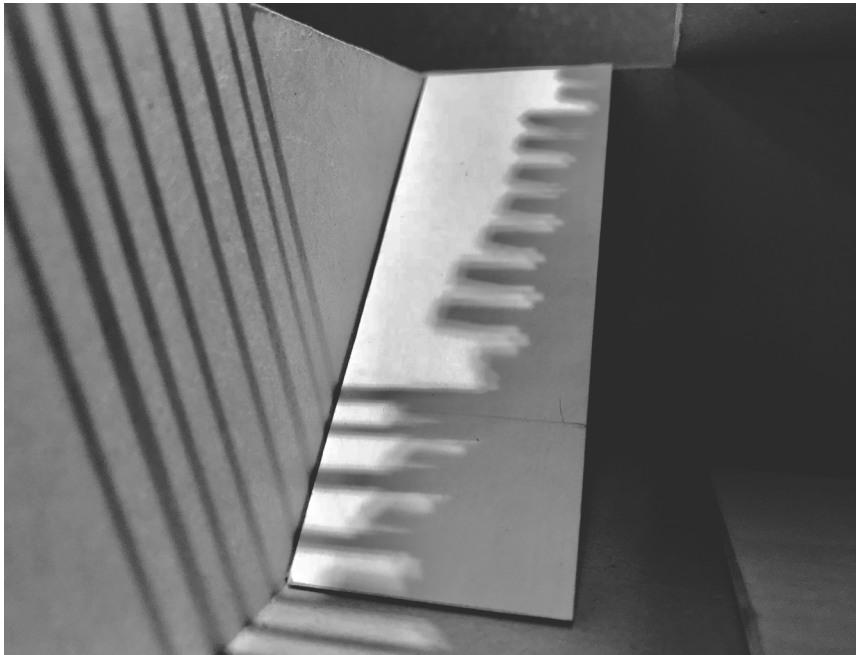




Exterior of final model.



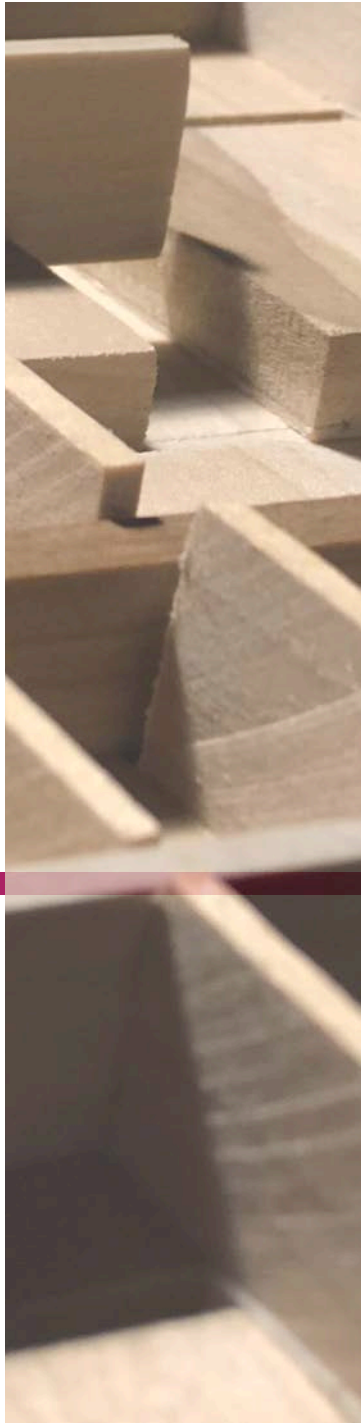
Interior showing lighting condition of space.



Detail of key moments defining lighting and shadow phenomena.



Interior of lower level.



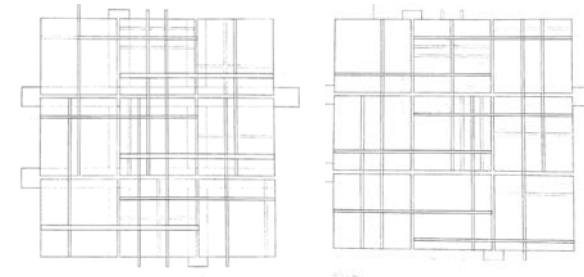
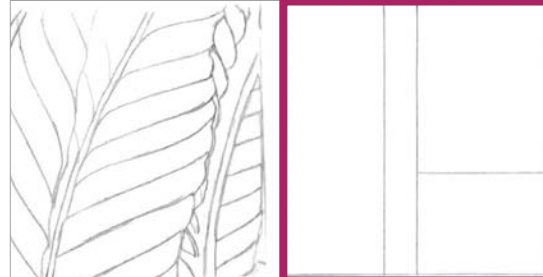
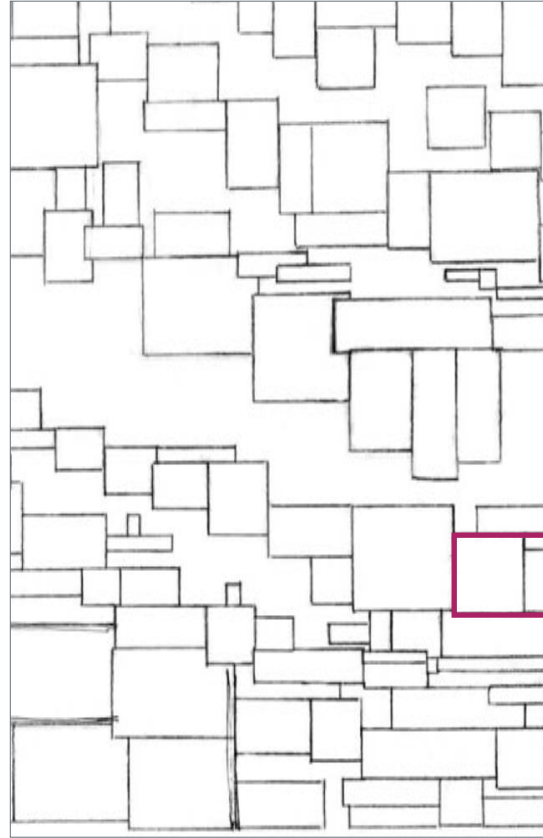
S2

---

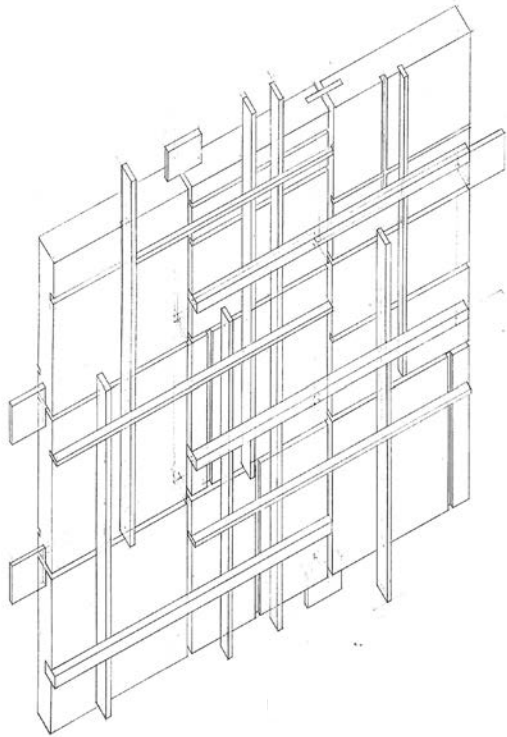
## STUDIO 02

The studio explored the spline wood joint not just as structure but as a design feature to produce a tile of an abstracted leaf constrained to a 9 square grid. The critical inquiry of experiential design of a folly on a contextual scale was also explored throughout the final project of this studio.



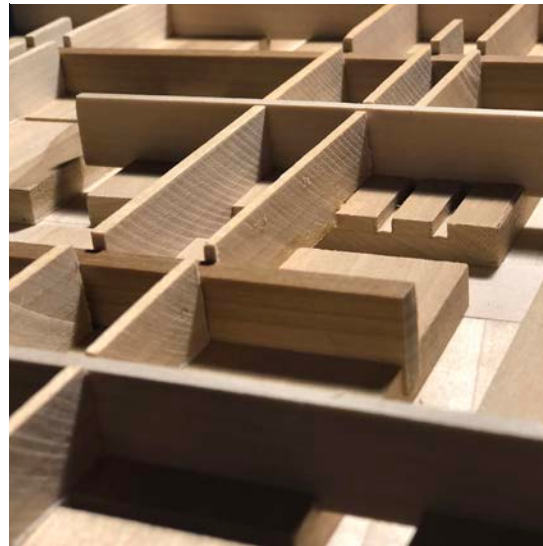


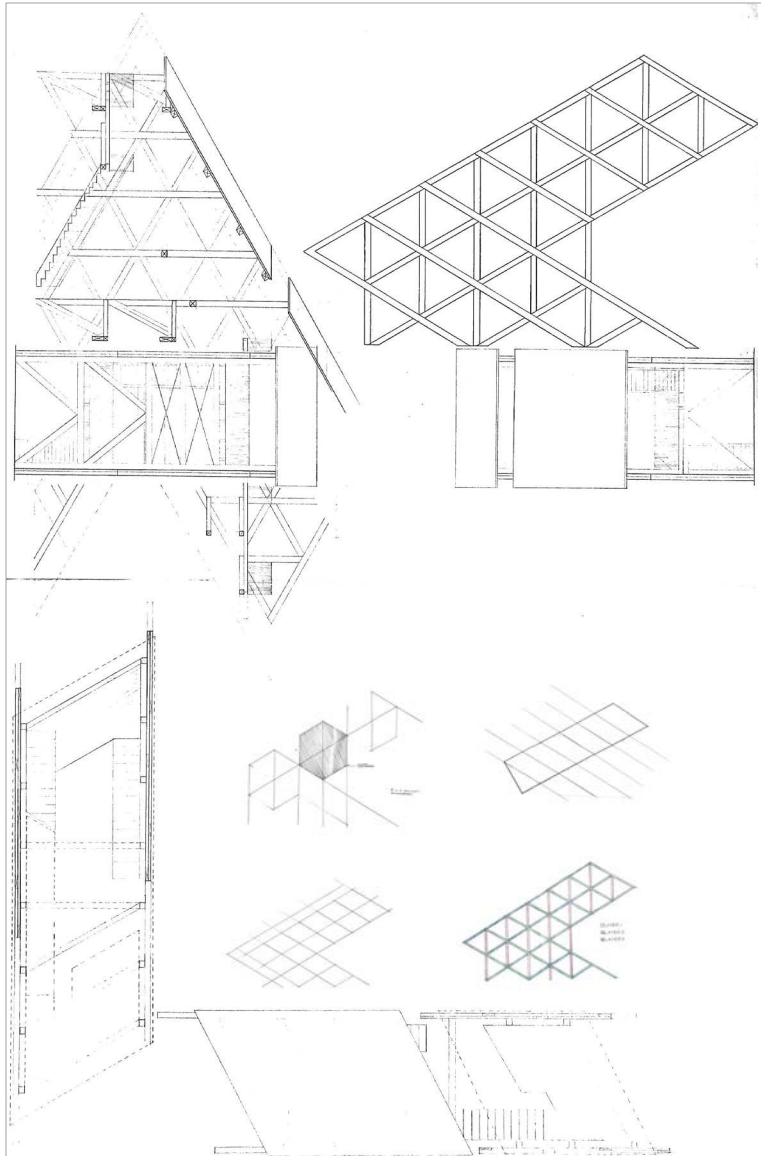




### HORIZONTAL CONNECTIONS

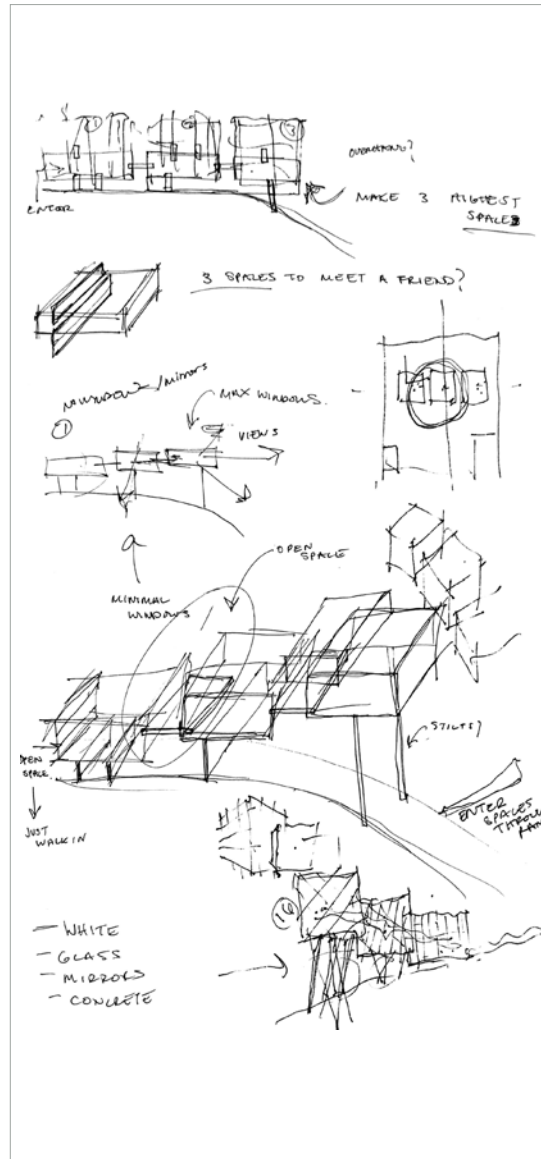
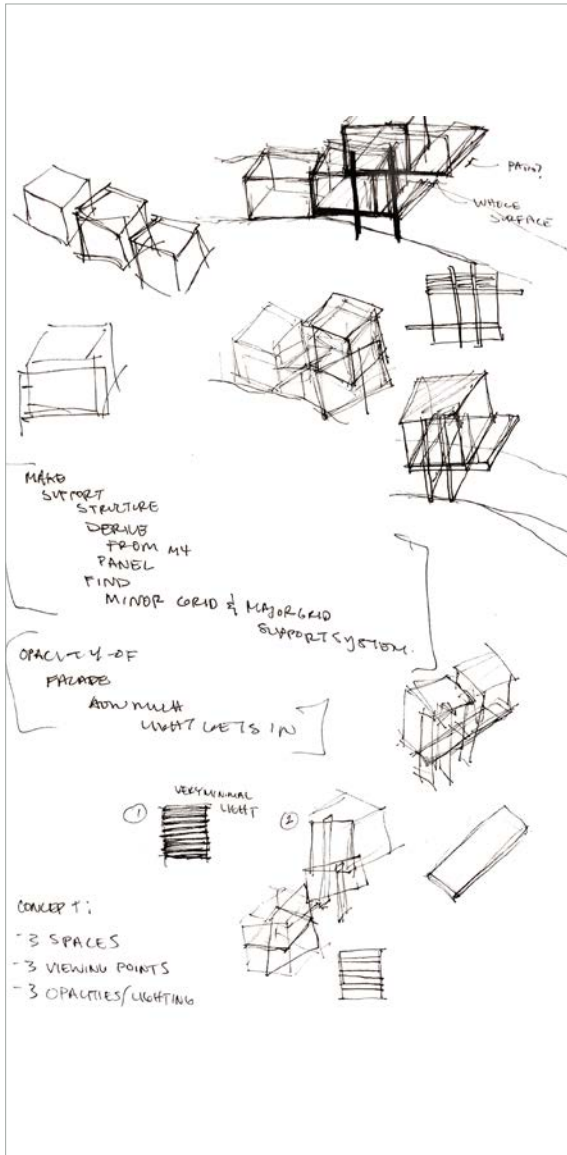
Through the abstraction of the ridges on a leaf, the idea of connectivity in a horizontal progression became the driving force for the artifact. Horizontal Connections incorporates a series of horizontal spline joints and minimal vertical splines connecting a larger tile at together.





The exercise informed diagramming of GMP Architekten Bird Tower that embodies alignment and modularity through repetition. From this understanding, it is implemented into the design process for a folley derived from the project Horizontal Connections.

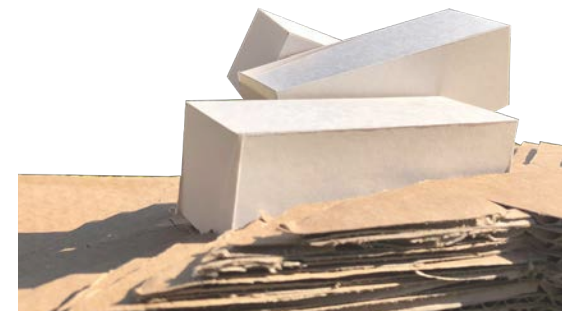




Parti model exploring structural methods.

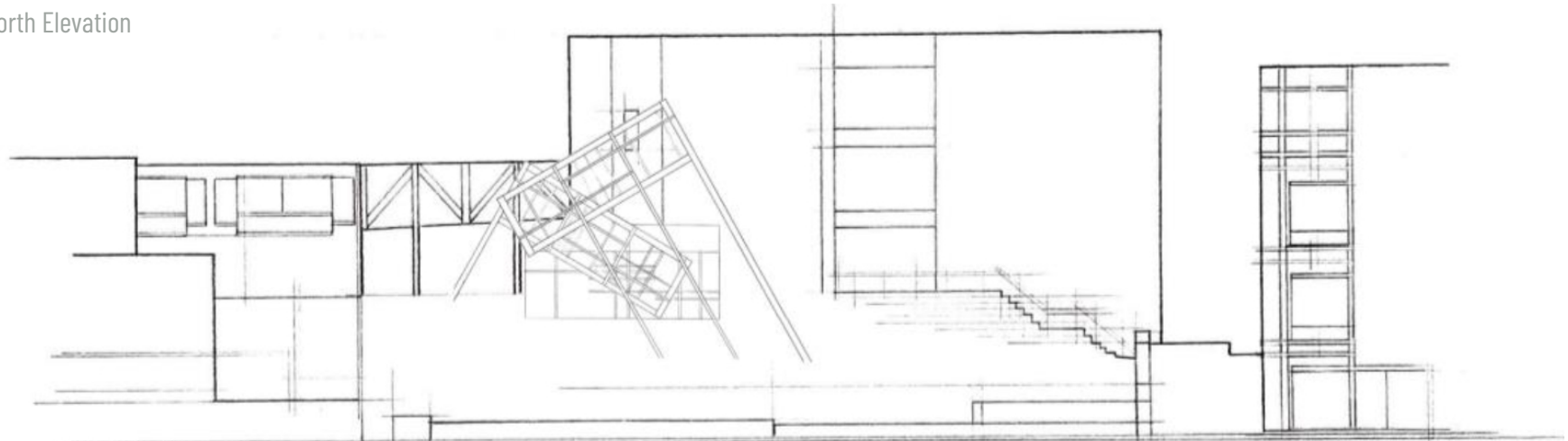


Parti model addressing site placement and strategies to maximize views.

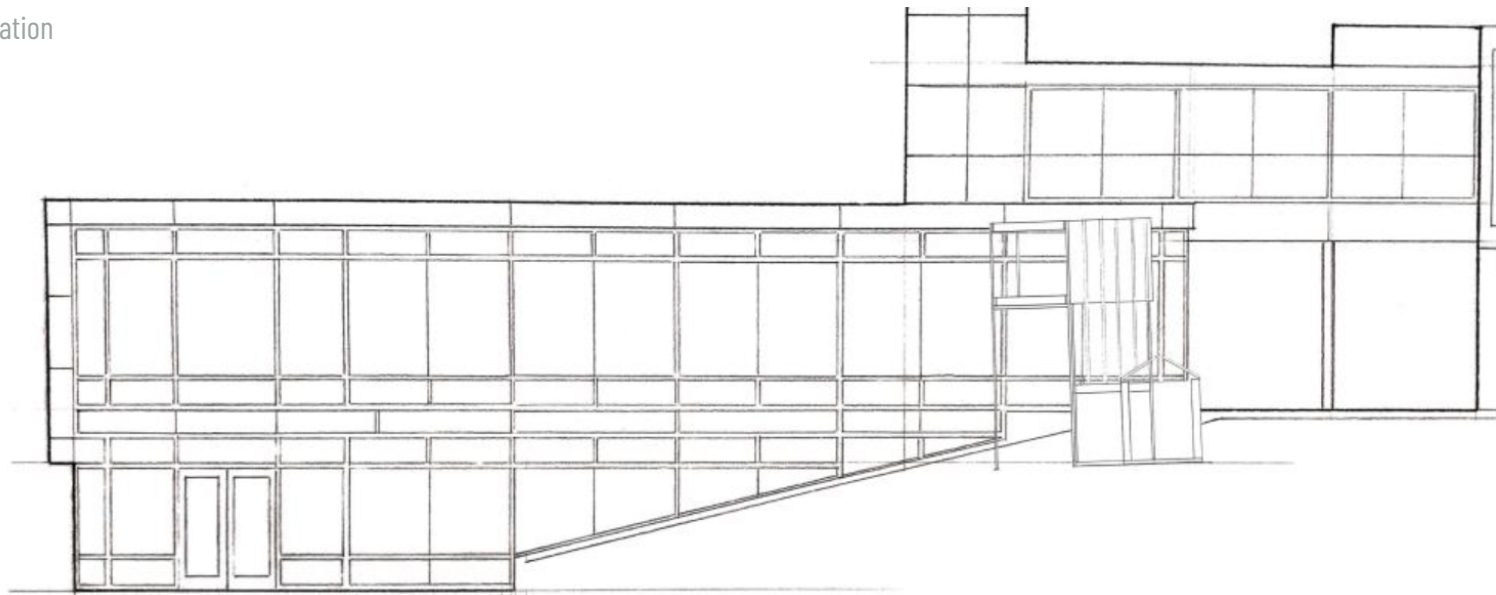


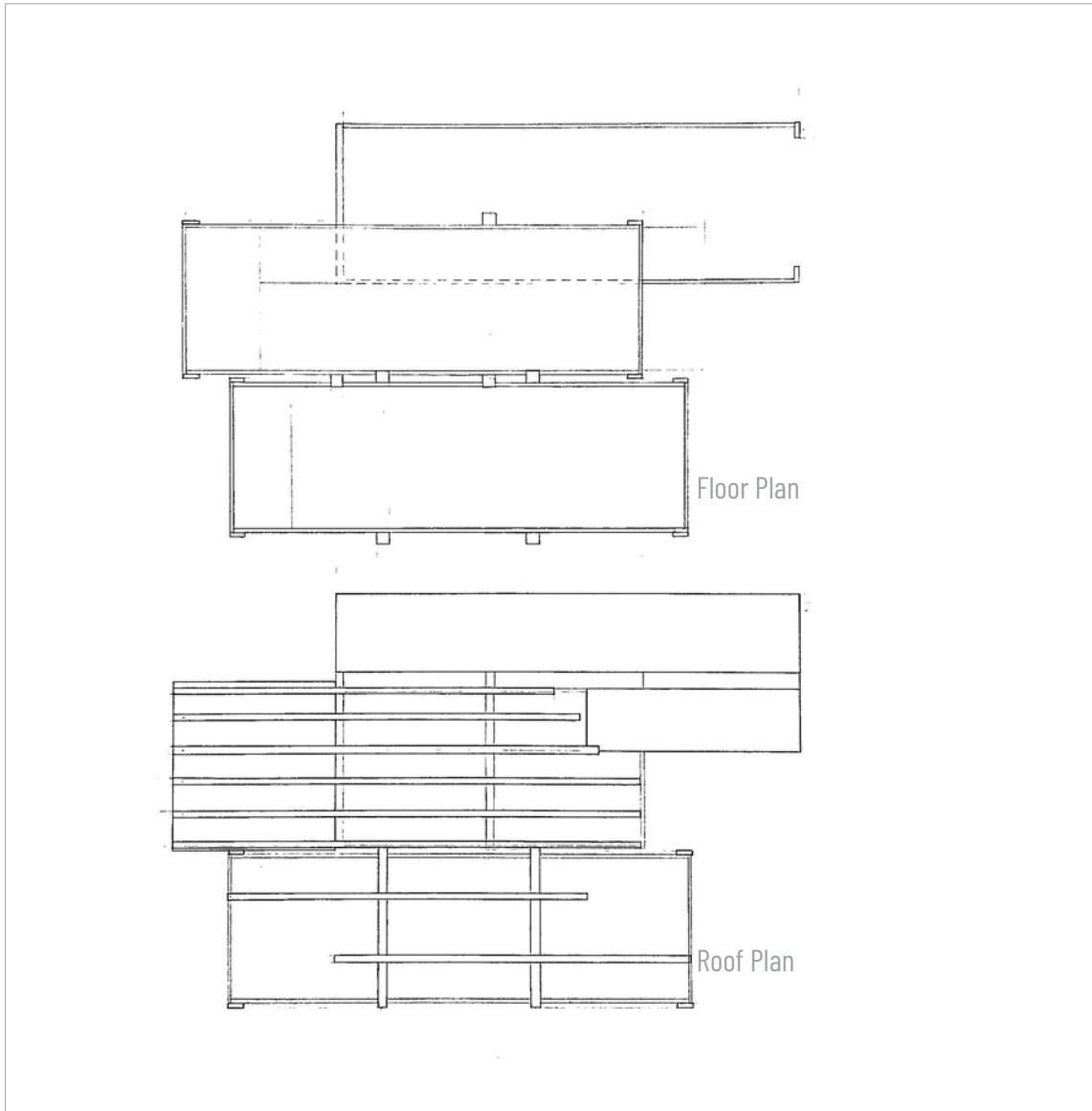
Conceptual sketches for a space to meet a friend. Incorporating Horizontal Connections and GMP Architekten Bird Tower for the basis of a critical inquiry on how to design a space to maximize views on a site while maintaining an experiential quality.

North Elevation



East Elevation





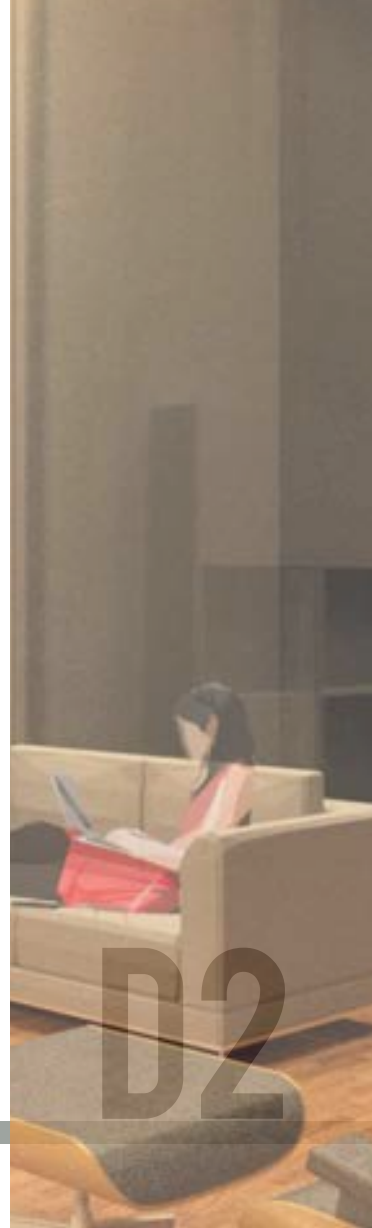
### ALLA VISTA

Alla Vista emphasizes the journey to meet a friend, by creating elongated ramps that lead up to the highest point for looking out. On this journey, a person experiences a progression of natural sunlight filtering through the space.







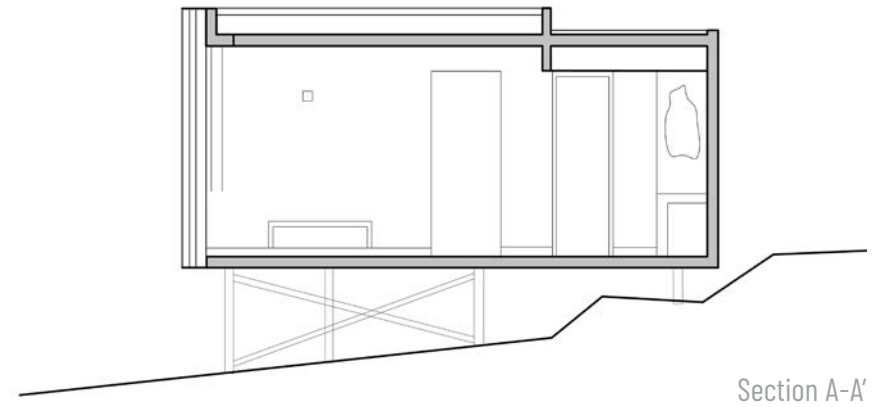
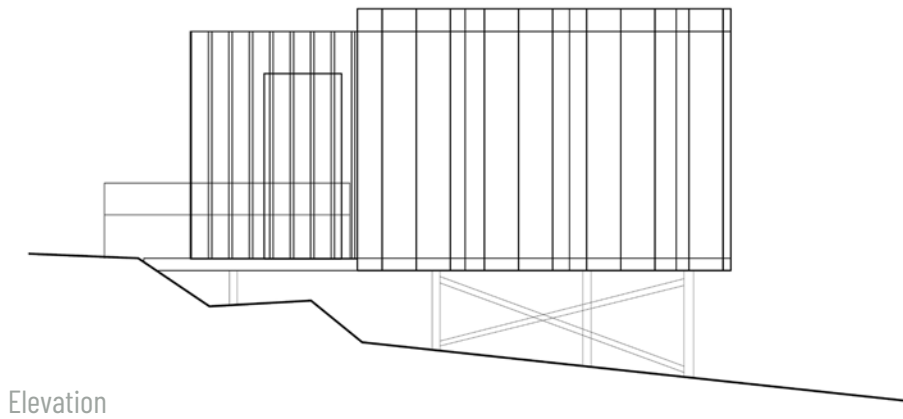
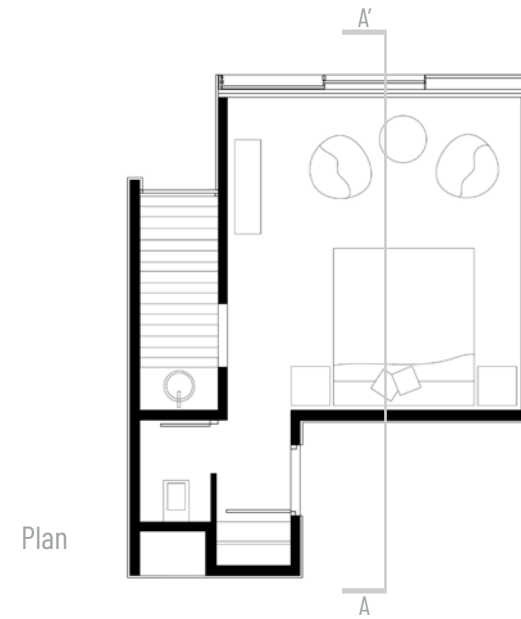
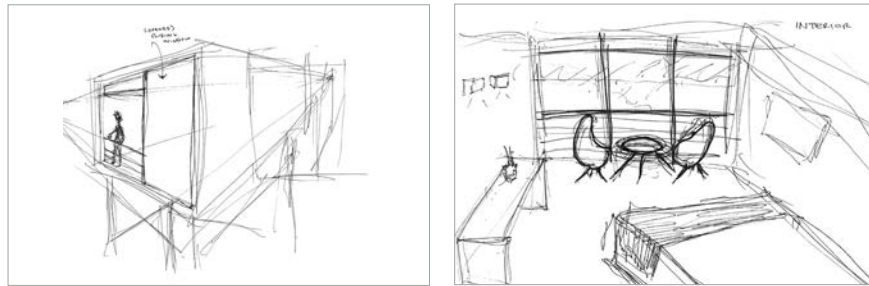
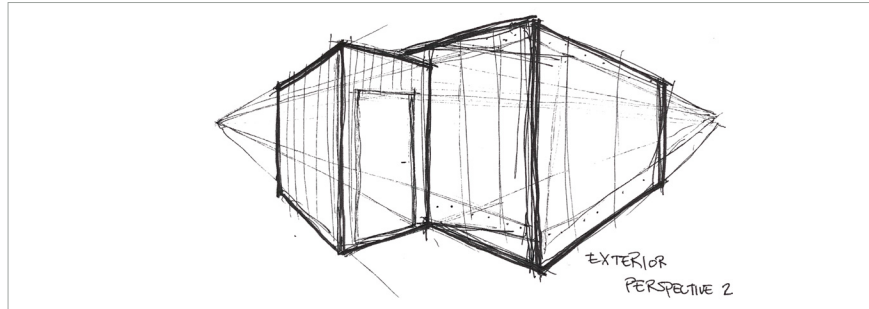


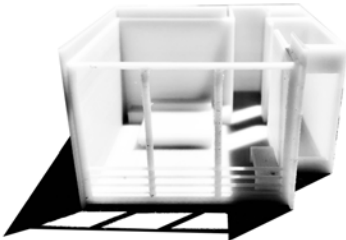
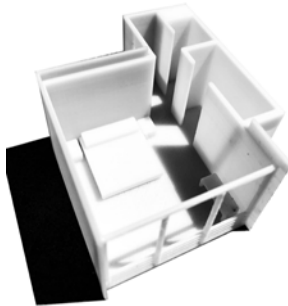
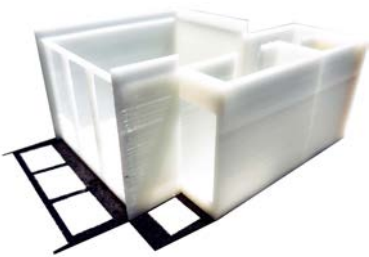
---

## DESIGN COMMUNICATIONS

D1 introduced the 3D modeling program Rhinoceros as well as an introduction to the Fabrication Lab Facilities and 3D printing.

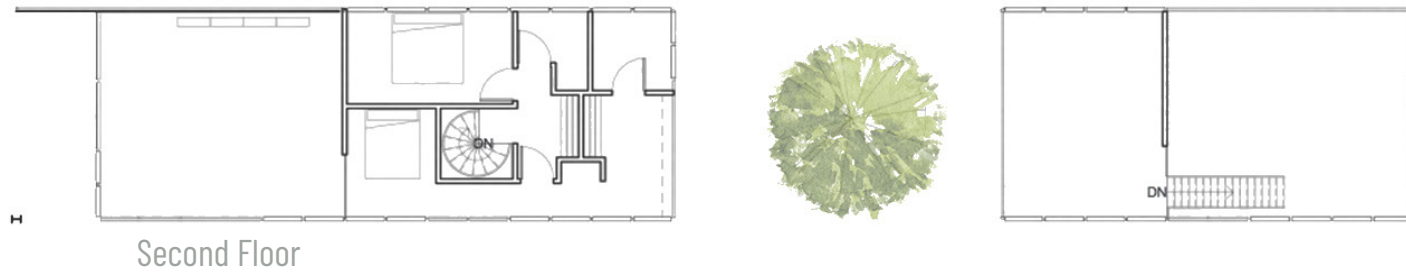
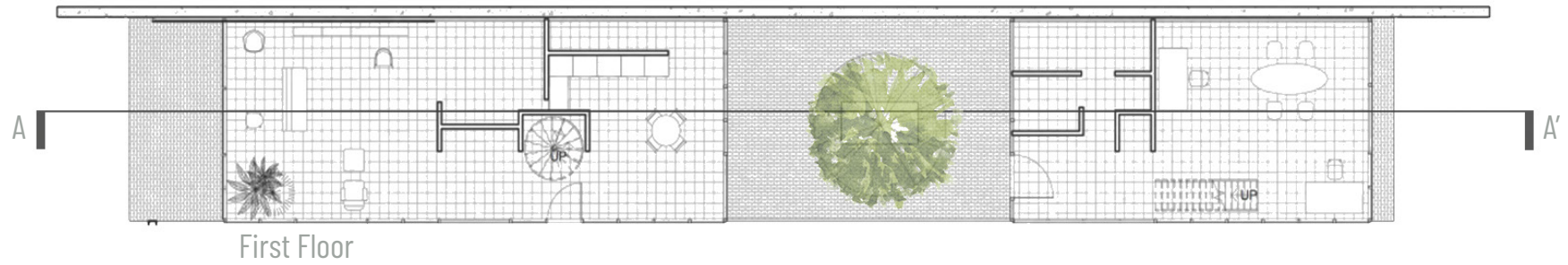
D2 introduced and established Revit skills and rendering skills using Vray and Photoshop.





3D Printed Model of Vivood Landscape Hotel

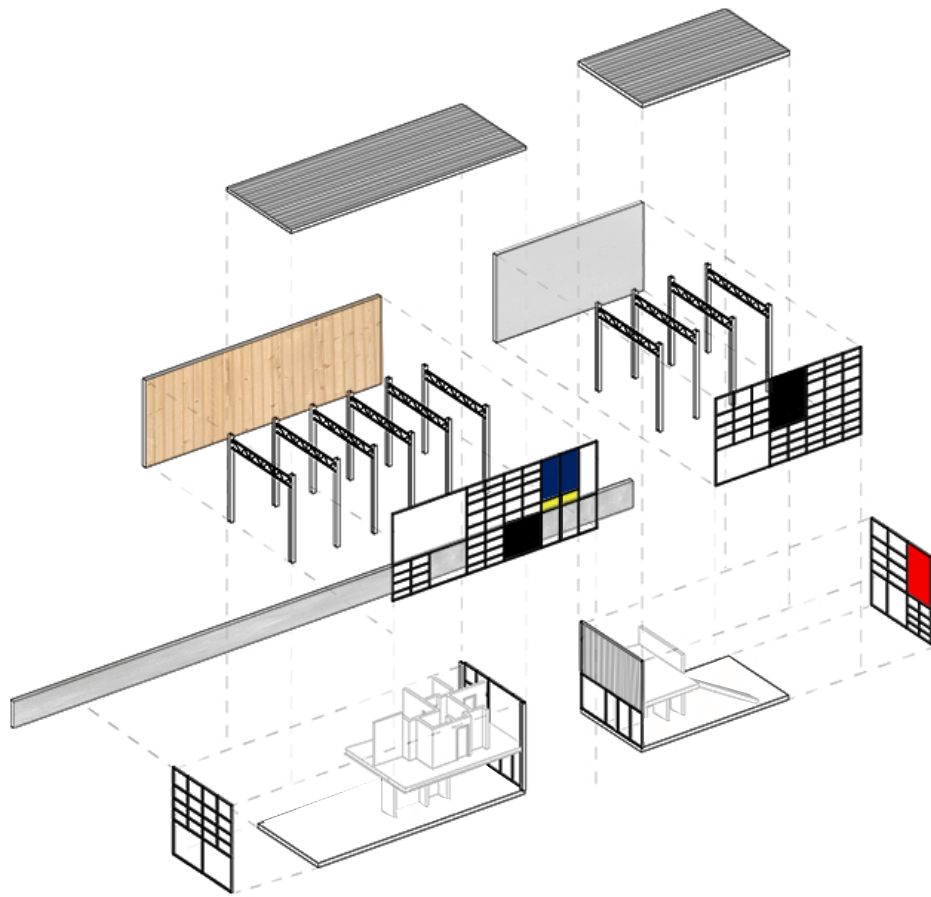




Elevation

Section A-A'





Exploded Axon



Interior Night Render



Interior Day Render



S3



## STUDIO 03

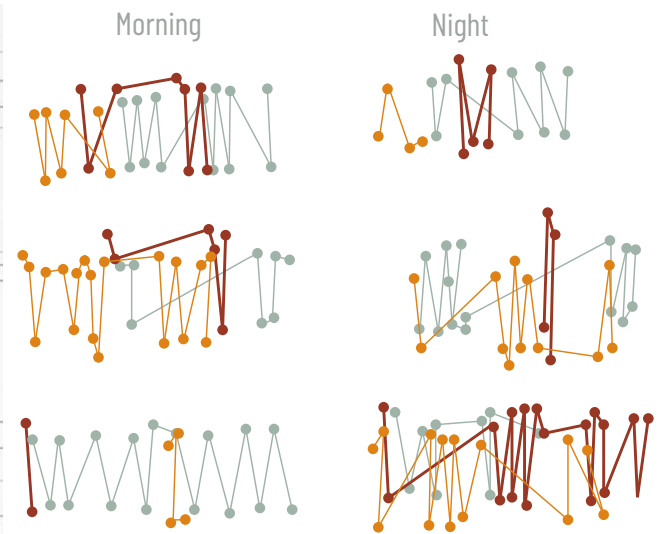
The studio explored conceptual design processes that integrate site studies, component developments and conceptual collages as a driving force for a project. The final project of the studio called for the design of a mixed-use studio and gallery that implements critical responses to the site context and concept.

### DENSITY OF NOISE IN MARIETTA SQUARE

Analysis of the highest peaks of sound waves generated from noises on the site. The analysis informed how all the sounds on the site interact with each other.

### COMPONENT DEVELOPMENT

A material swatch of a larger component that can be integrated into a pavilion that generates noise and is kinesthetic. The approach was to investigate spatial opportunities from the component or strategically integrate the component in the final design.



Initial Swatch of Component 1



Closeup of Swatch



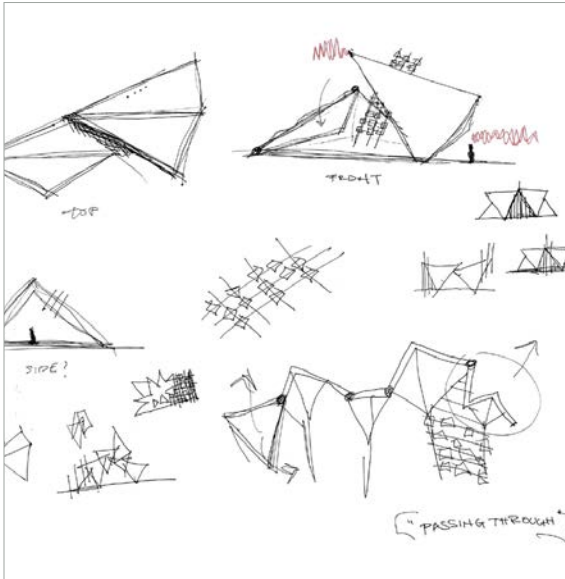
Revised Swatch of Component





Re-development of material component to achieve kinesthetic capabilities. The component has a simple ball and socket joint and can rotate and be adjusted to become seating within a small scale or a tactile facade on a larger scale.





Iterative Conceptual Sketches



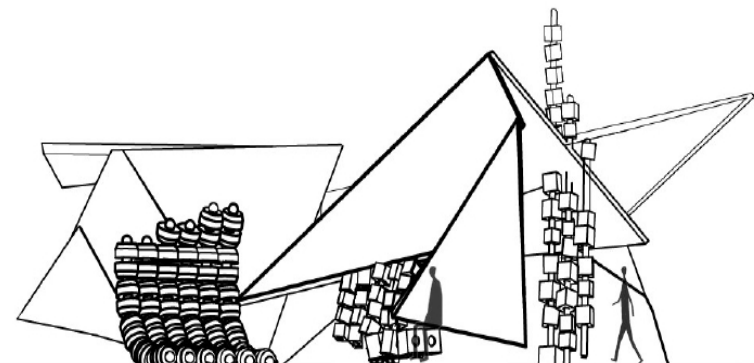
Form Finding Gesture Model 1



Form Finding Model 2

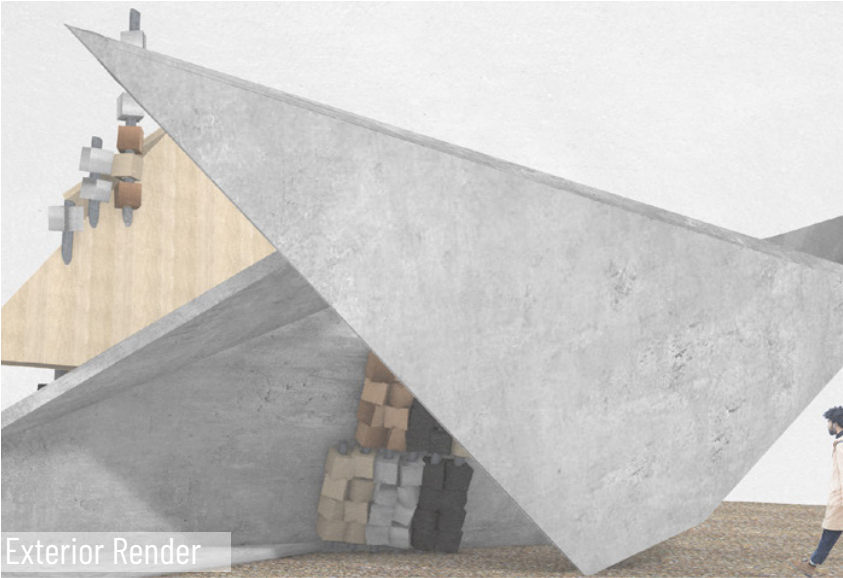
### NOISEGROUND PAVILION

NoiseGround stimulates the haptic and auditory sense. "Noise Zones" generate various types of noise and distinct sounds on site. NoiseGround creates an interactive approach to our senses and the human's perception of sound becomes conscious.

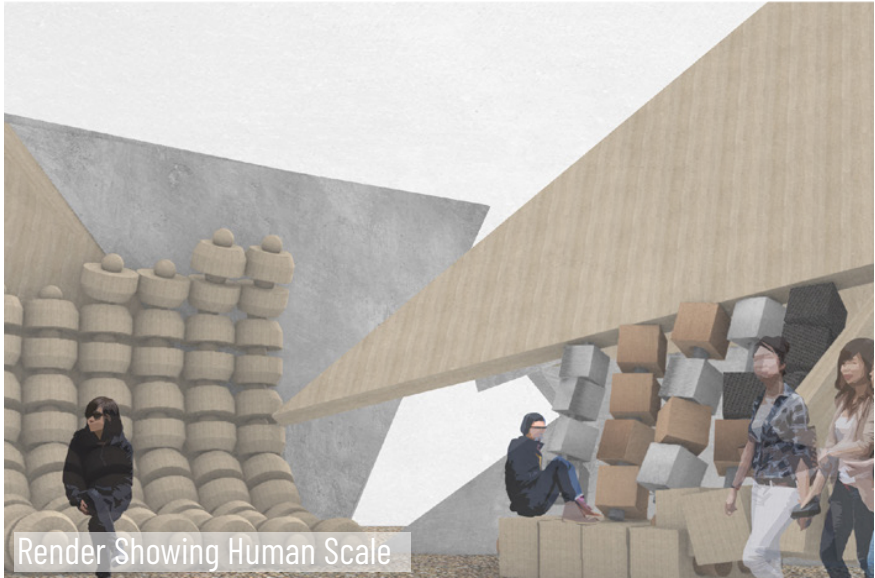


Elevation 1

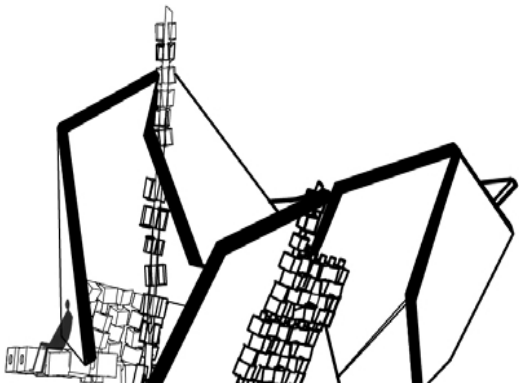




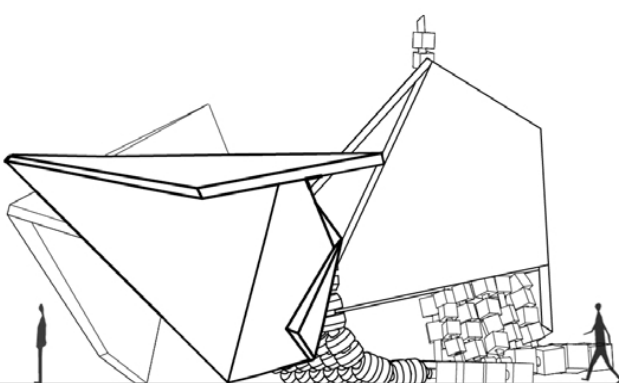
Exterior Render



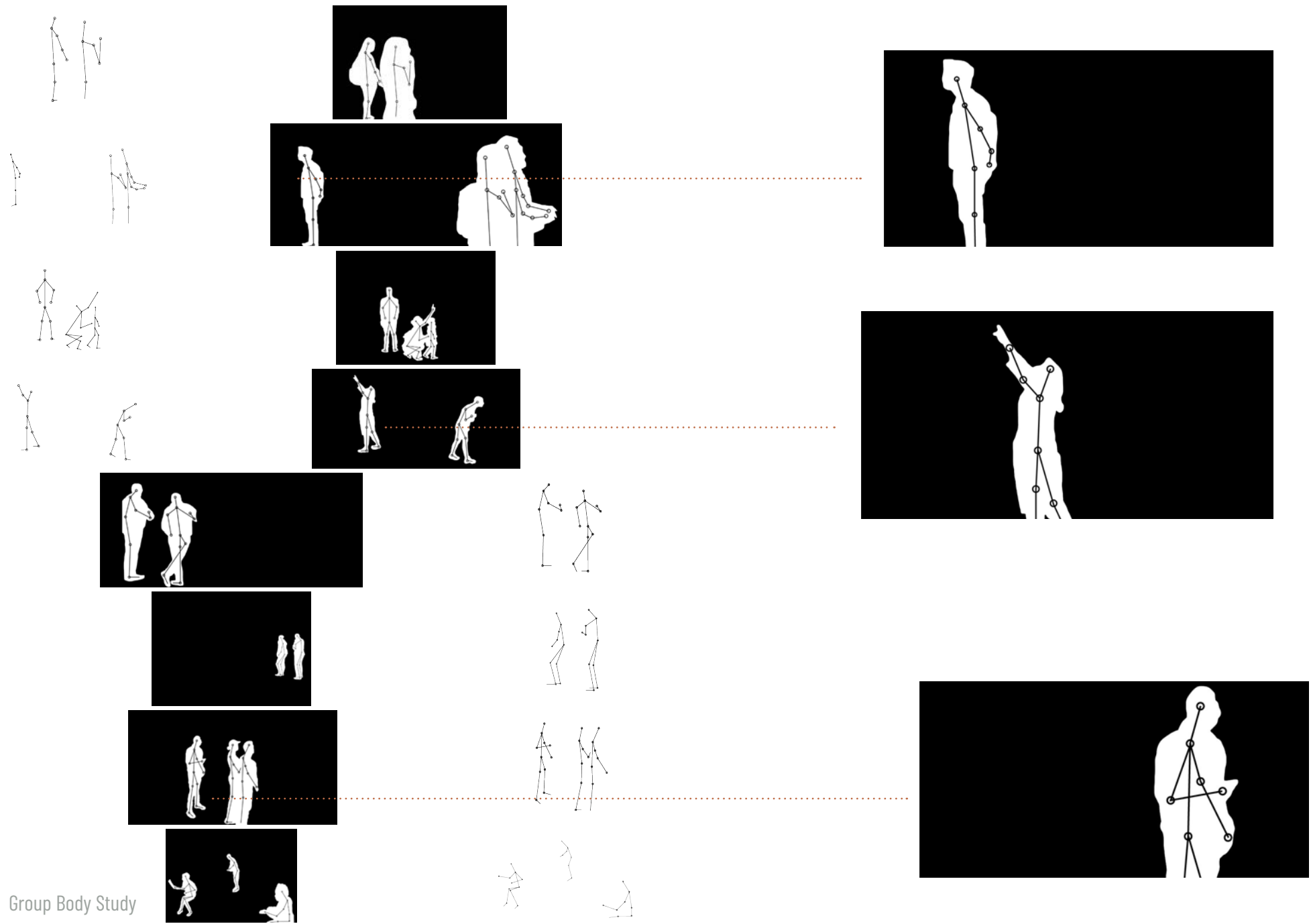
Render Showing Human Scale



Cross Section



Elevation 2

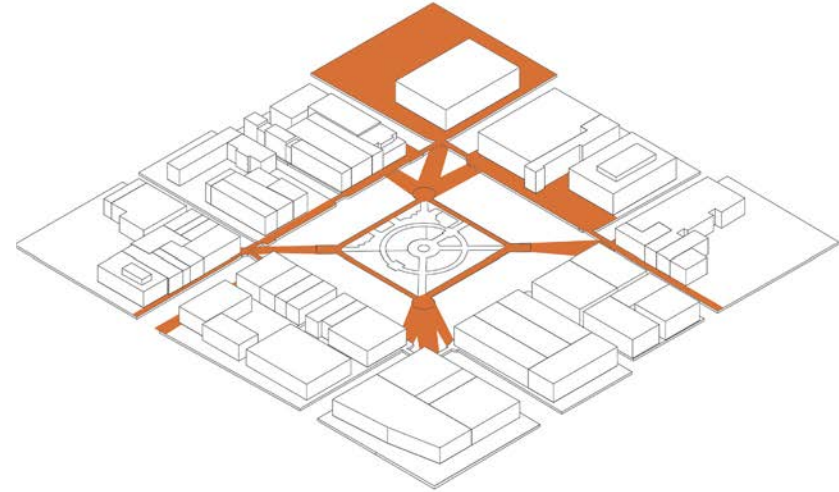


Group Body Study





Site: Marietta Square, Georgia



#### CAPTIVE AUDIENCE BODY STUDY AND PATTERN OF USE ON SITE

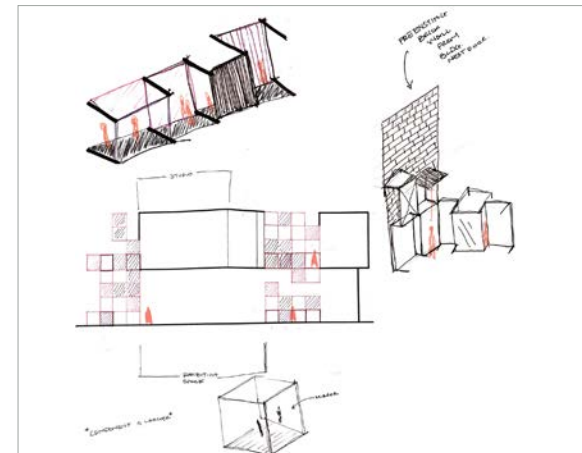
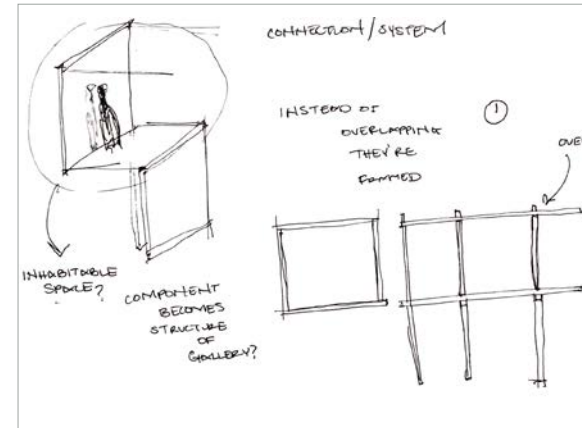
Studying the body movements that are expressed in an art gallery informed the categorization of a captivated audience that is immersed with the art. From that study, the application of identifying “captivated” people on site begins.

The “captive public” site study indicates the path of the pattern of use on the site frequently taken by a “captivated” person on site.

The captive public is characterized as single people that are generally isolated from their environment in terms of being conscious within the space. The study highlights moments when a person becomes aware that they are in a space and when a person is no longer “captivated”.



Conceptual Collage



To push the design, a conceptual collage that challenges the perception of the outside being inside was established. From this, iterative sketches to develop a component that supports the conceptual collage was generated.



Component Investigation

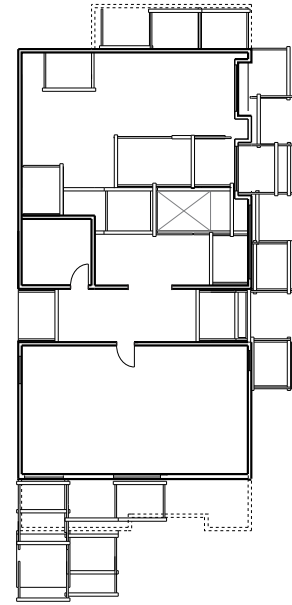


- exhibition/gallery
- gallery office
- studio
- public unisex restrooms
- delivery/receiving
- Food prep/small kitchen
- studio storage/gallery storage
- office
- mechanical room
- elevator
- utility closet

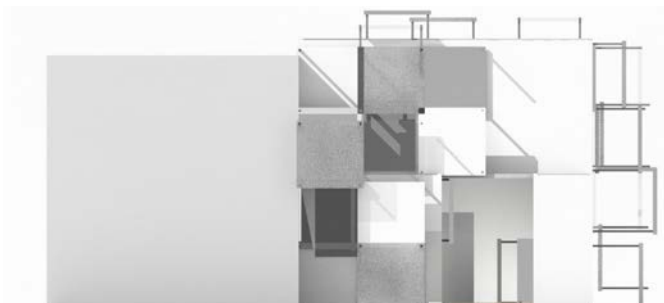
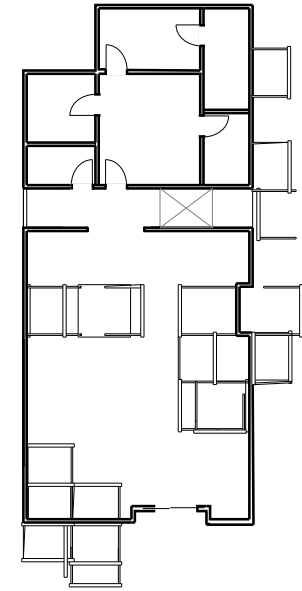
Program Distribution



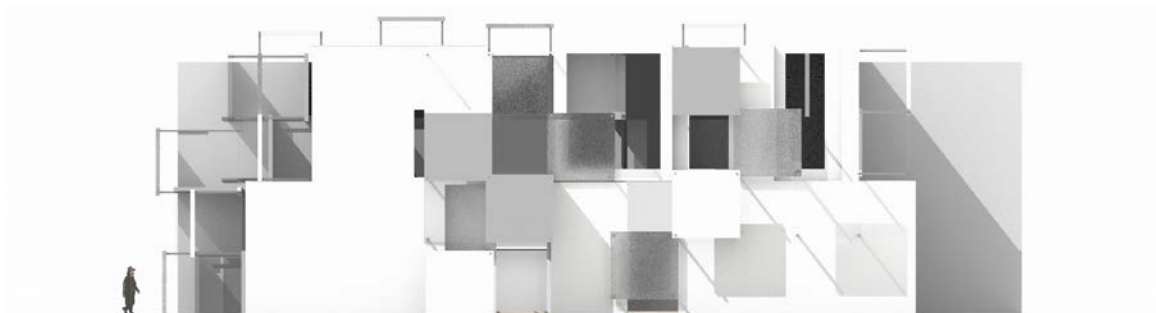
First Floor Plan



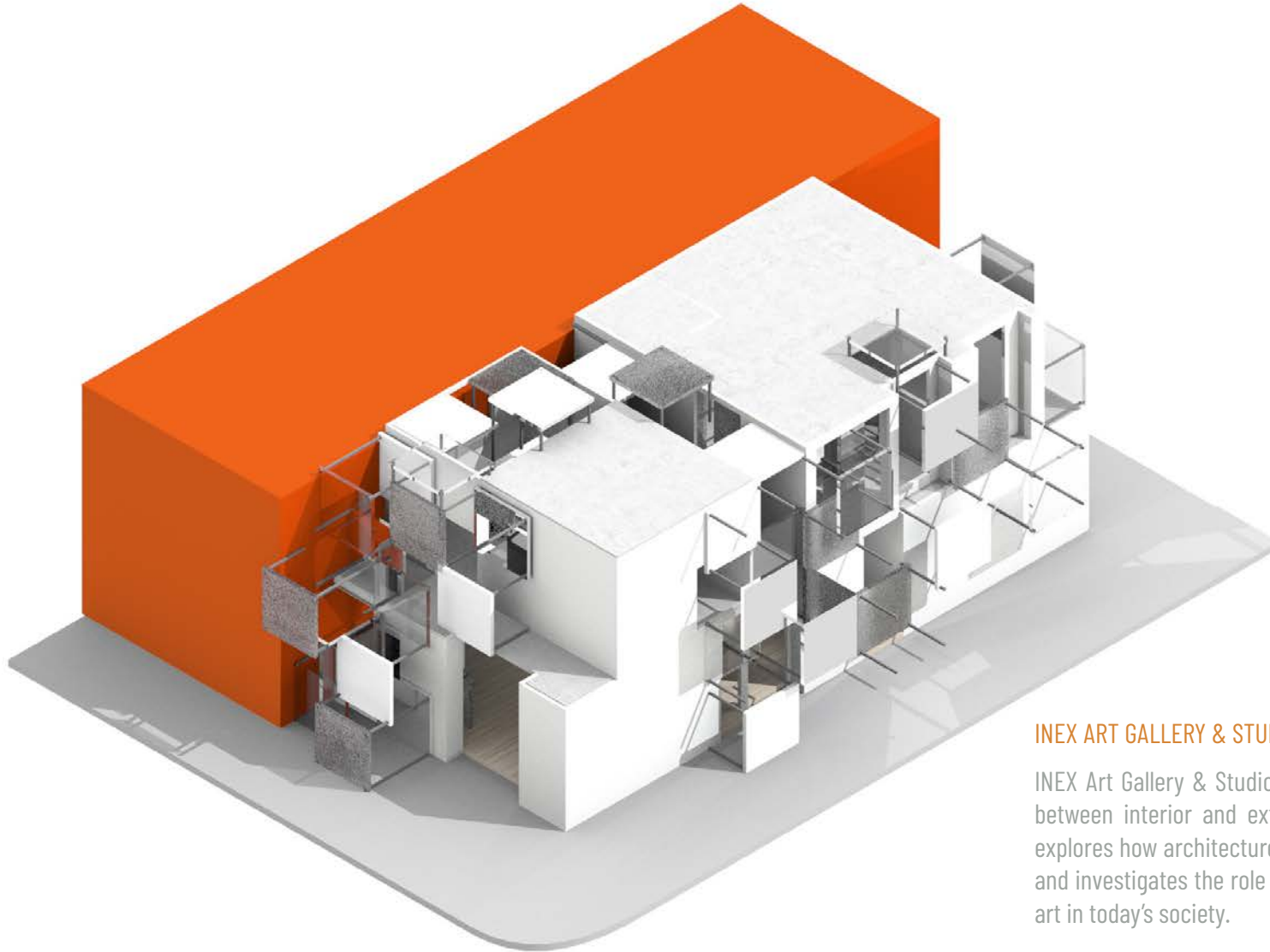
Second Floor Plan



North Elevation



East Elevation



### INEX ART GALLERY & STUDIO

INEX Art Gallery & Studio subverts the relationship between interior and exterior spaces. The gallery explores how architecture engages the social realm and investigates the role of public space and public art in today's society.

With a facade that essentially erodes into the art gallery, this blurred line between what is perceived as "outside" and "inside" is the core of the gallery itself while captivating the captive audience on site.







Closeup Showing Human Scale

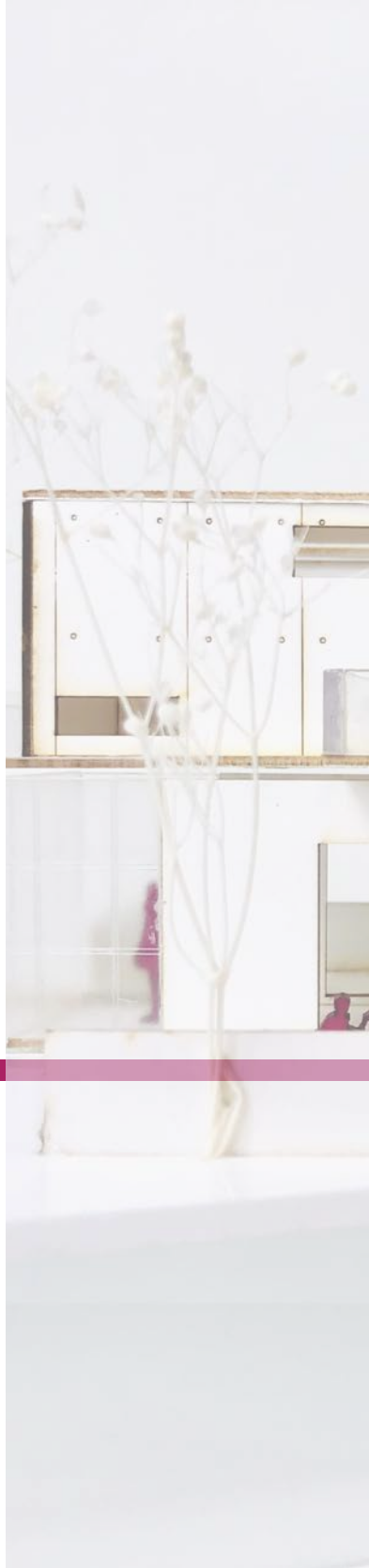


Facade Integration



Materiality of Facade



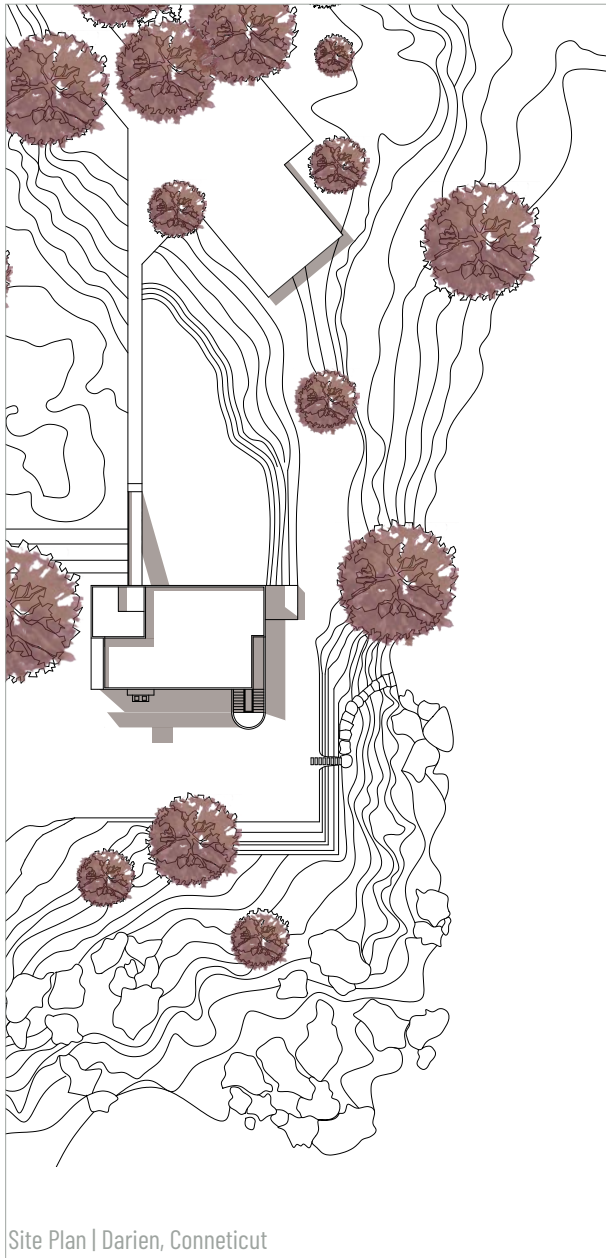


S4

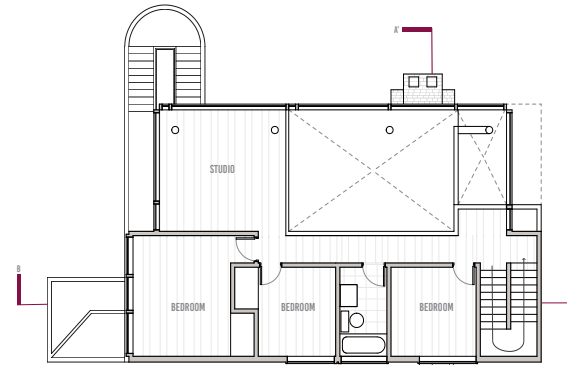


## STUDIO 04

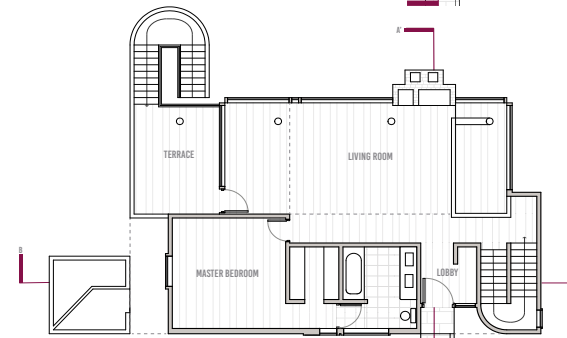
The studio refined the skills of technical drawings and analytical diagramming. By incorporating residential projects that reflect a more intimate scale, understanding programmatic needs and their significance in a project was a critical component from the studio. The final project was to design a single-family residence in Old Fourth Ward, Georgia.



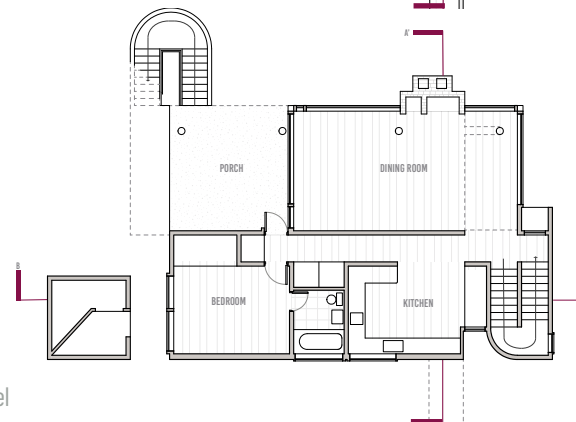
Upper Level



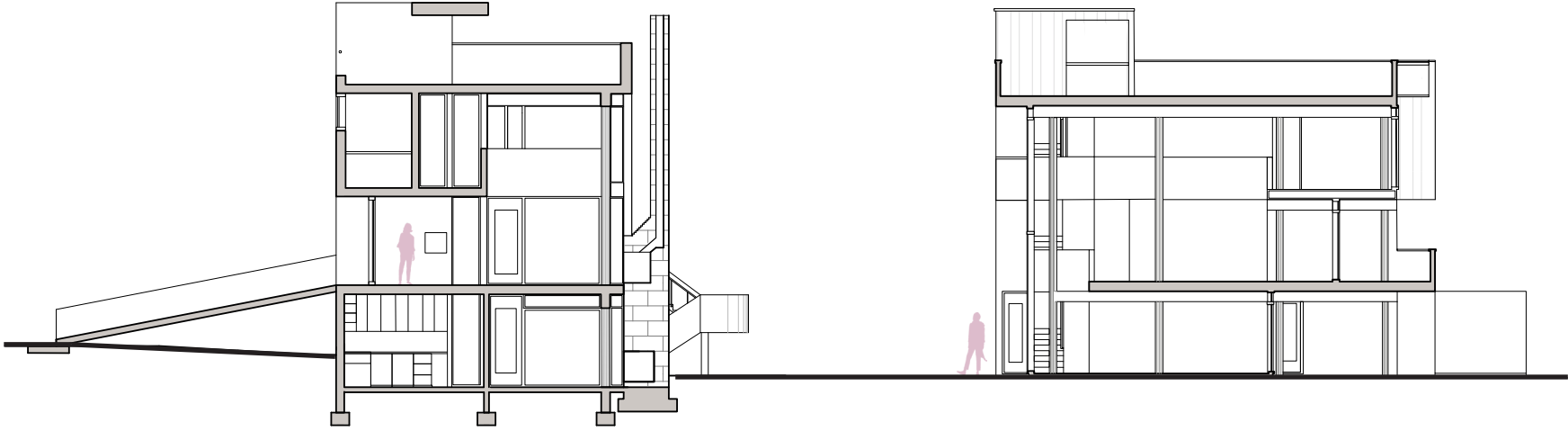
Middle Level



Entry Level

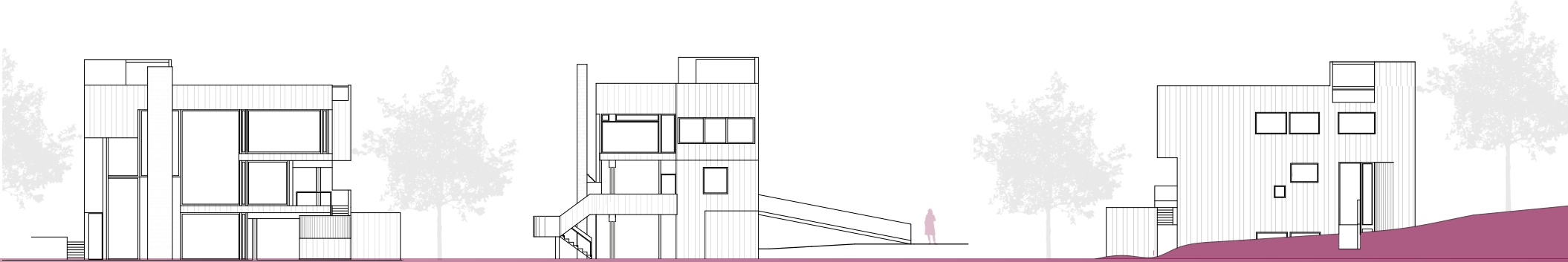






Cross Section A-A'

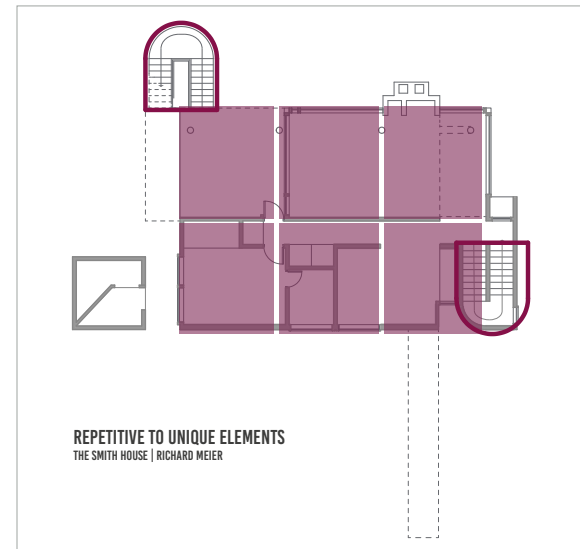
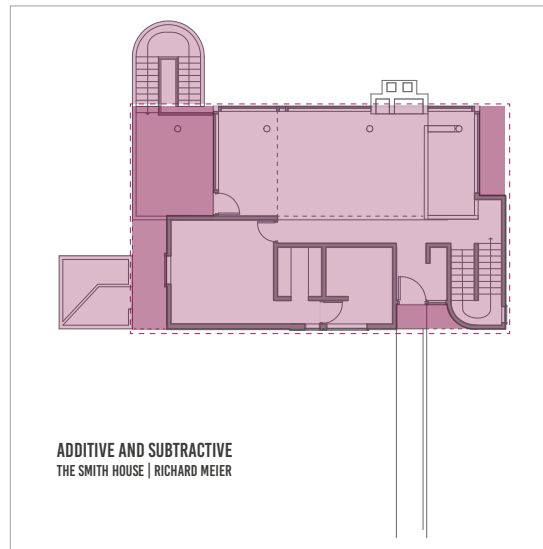
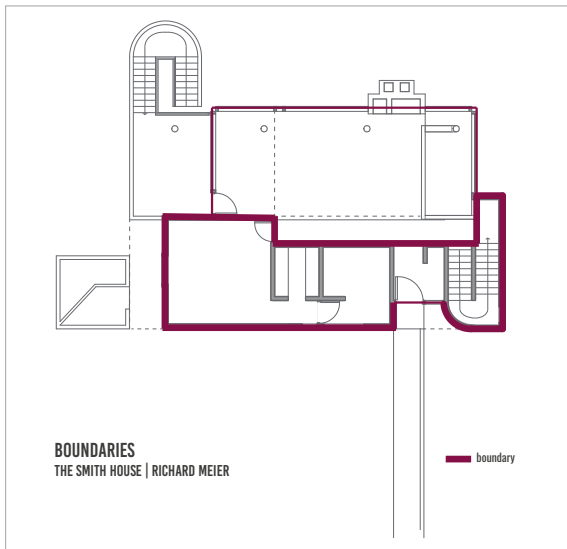
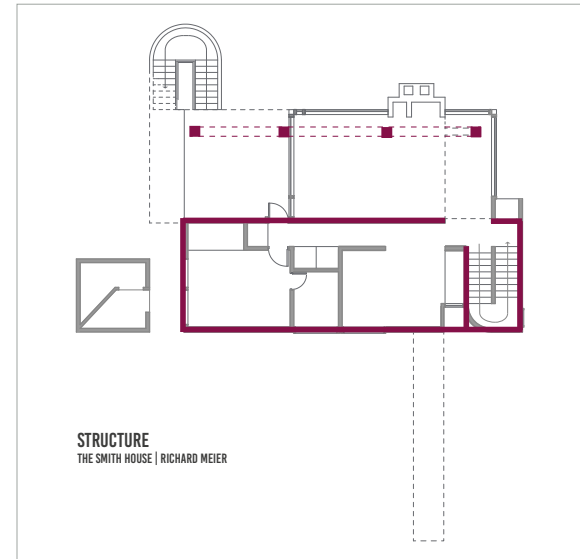
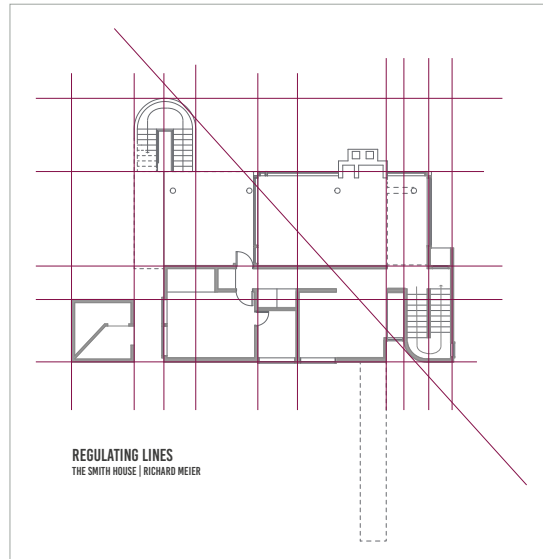
Longitudinal Section B-B'

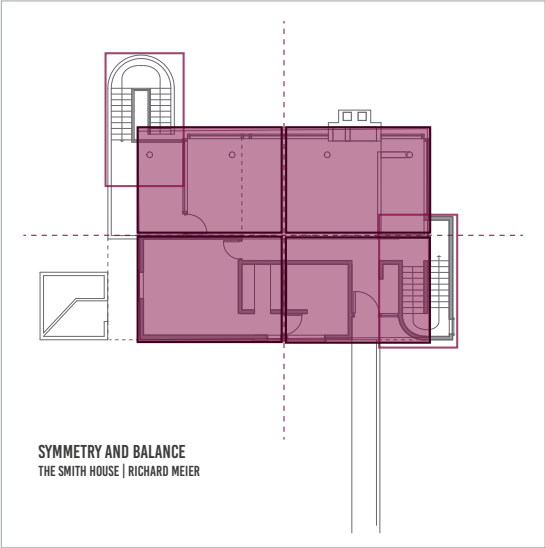
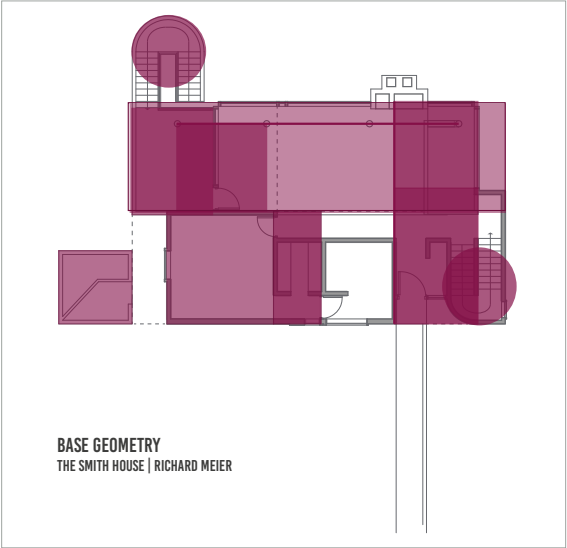
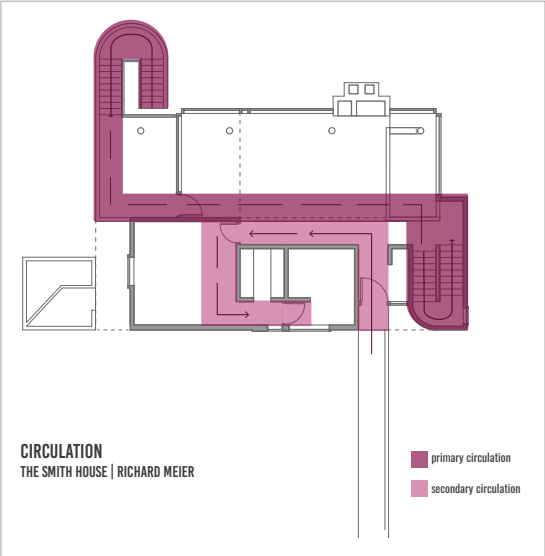
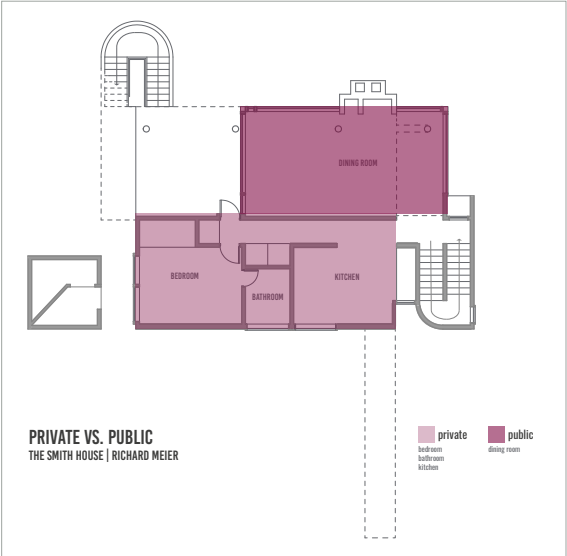


South Elevation

East Elevation

North Elevation





**ANALYTIC DIAGRAMS AND PARTIS**

This project called for the development of critical analysis of the precedent in order to understand not only analytical diagrams but also formative ideas and partis within a design. Through overlays, geometry, and lineweights the understanding of diagraming key elements within a floor plan became evident.



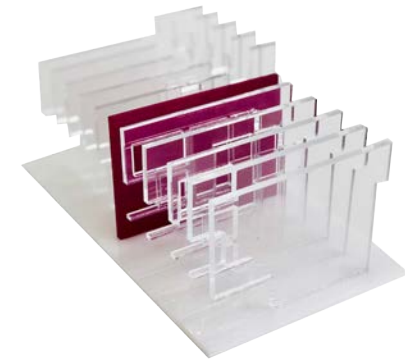
Volumetric



Structural

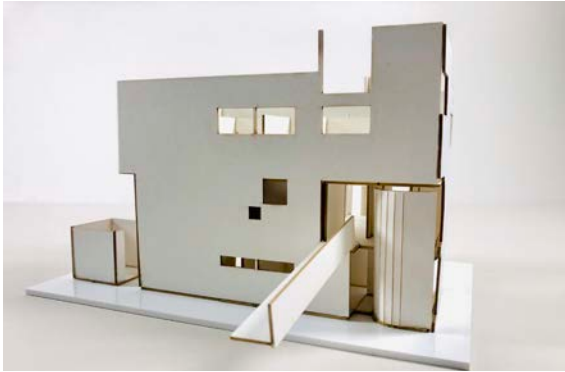


Circulation



Solid vs. Void





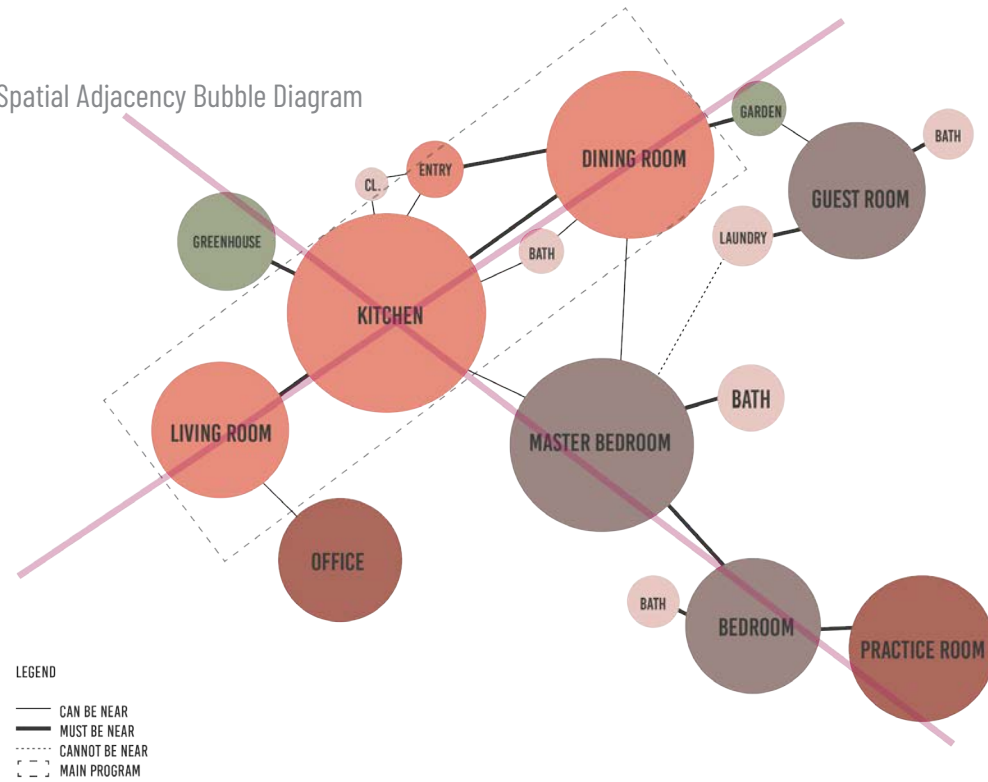
### CLIENT ANALYSIS

The Mui's are a family that loves nature, loves community and each other. Having a home that emphasizes their strong connection to their community, themselves and their culture is very essential.

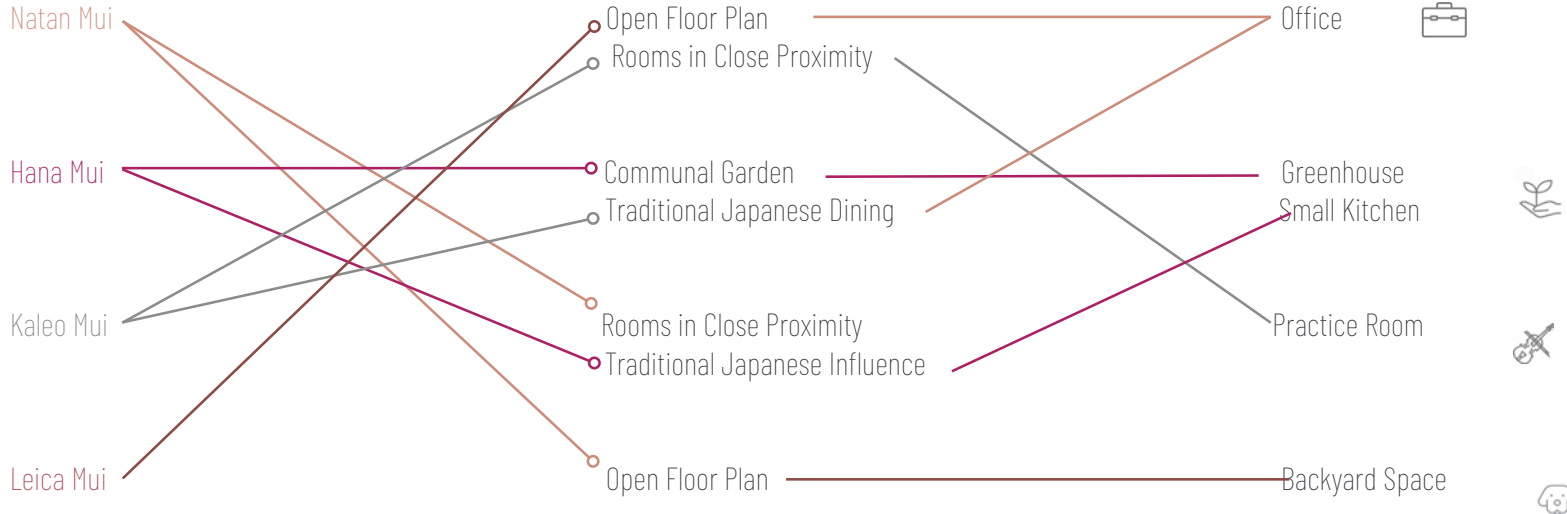
Combining their strong familial bond and identity through studies of Japanese architecture of organization of spaces connects to their cultural roots in an architectural sense that informs programatic and circulation design decisions.

-  Natan Mui | Father | 35 years old | Anthropology Professor 
-  Hana Mui | Mother | 32 years old | Botanist/Florist 
-  Kaleo Mui | Son | 7 years old | Violinist 
-  Leica Mui | French Bulldog | 2 years old | Pet 

Spatial Adjacency Bubble Diagram



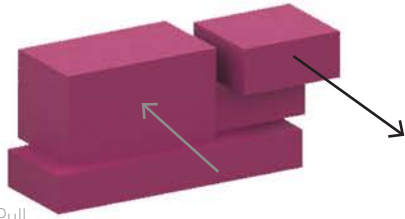
### Household Needs and Wants Crossing Paths



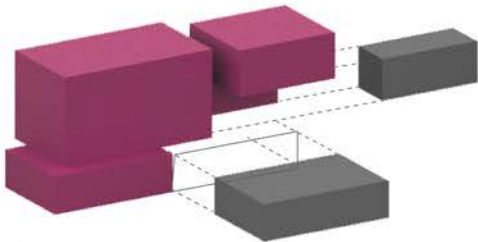
### Form Manipulation



Base Geometry



Push & Pull



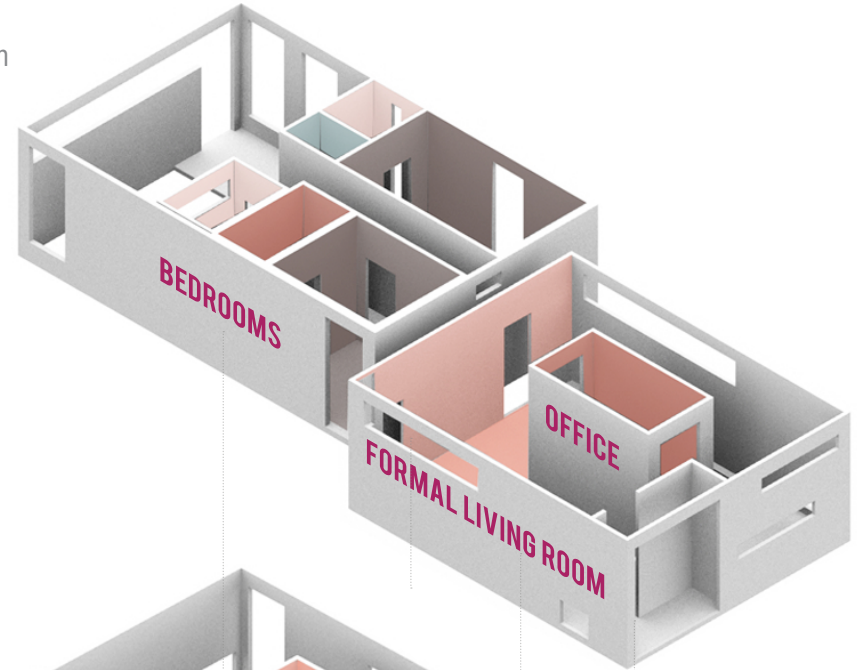
Subtraction



Carve

### Program Distribution

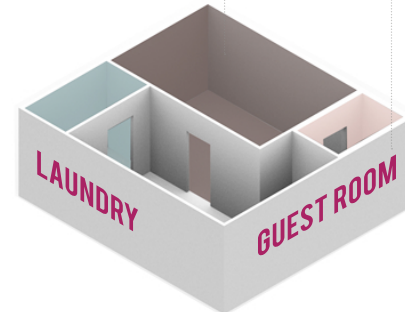
Upper Level  
Fulfills Needs of:

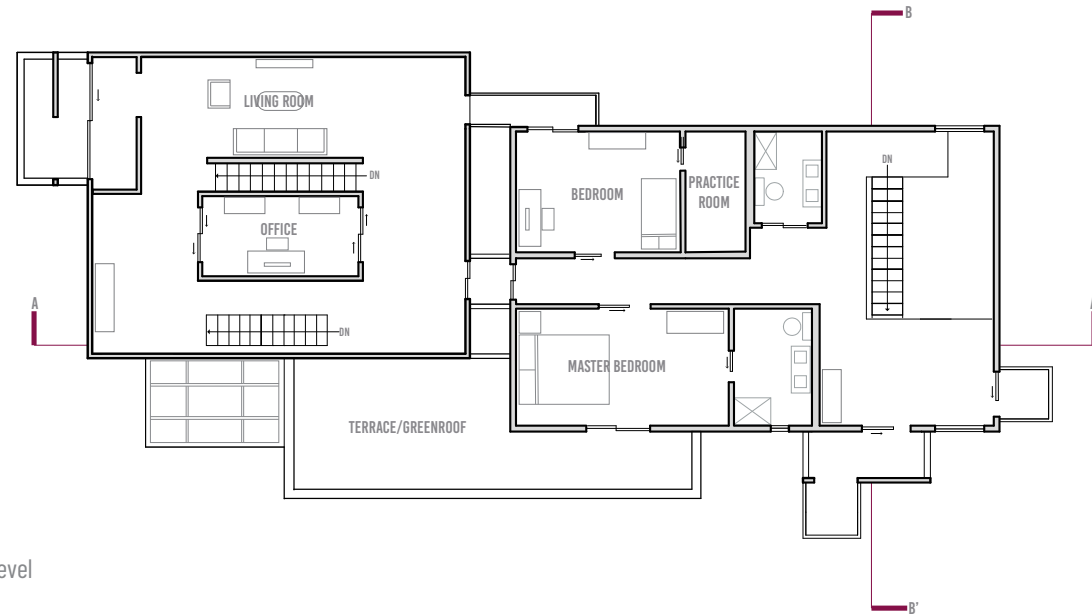


Entry Level  
Fulfills Needs of:

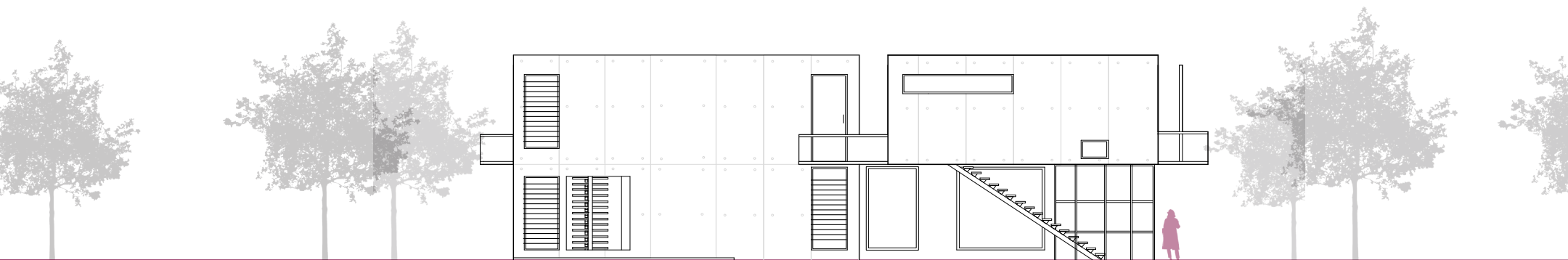


Lower Level

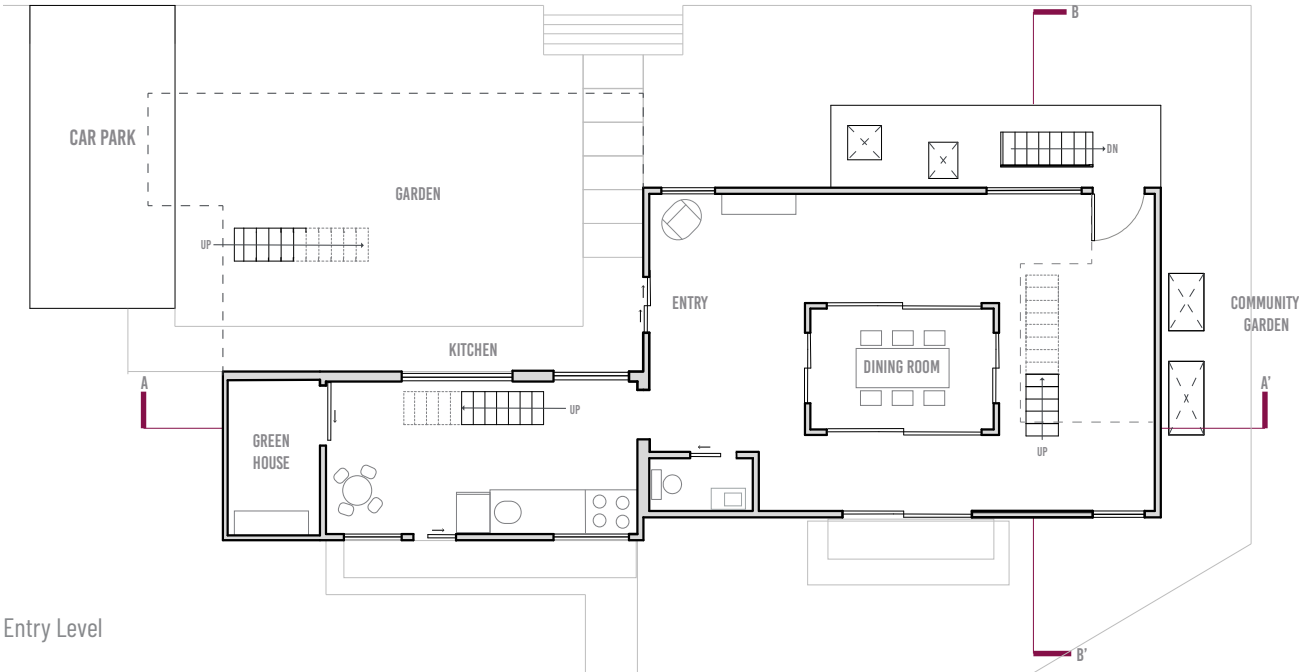




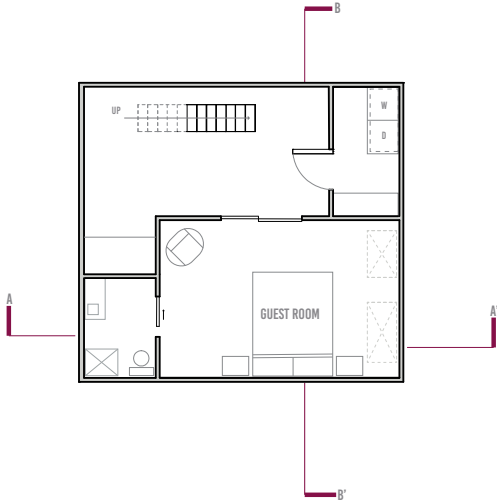
Upper Level



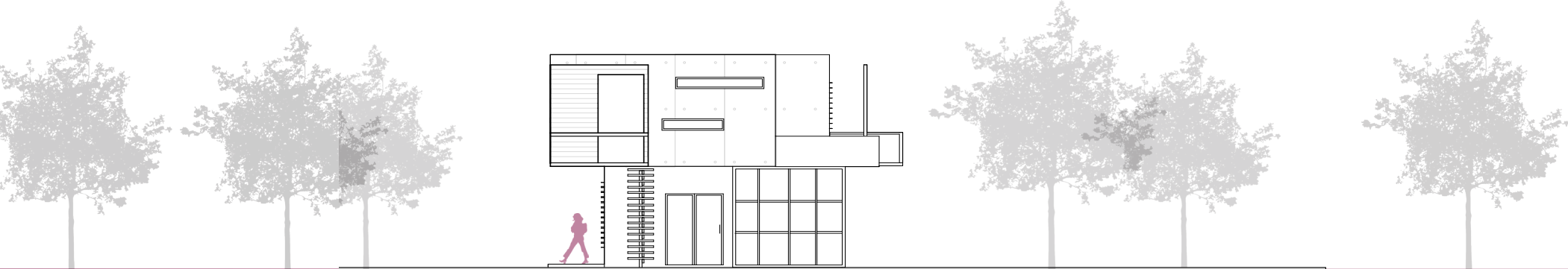
South Elevation



Entry Level



Lower Level



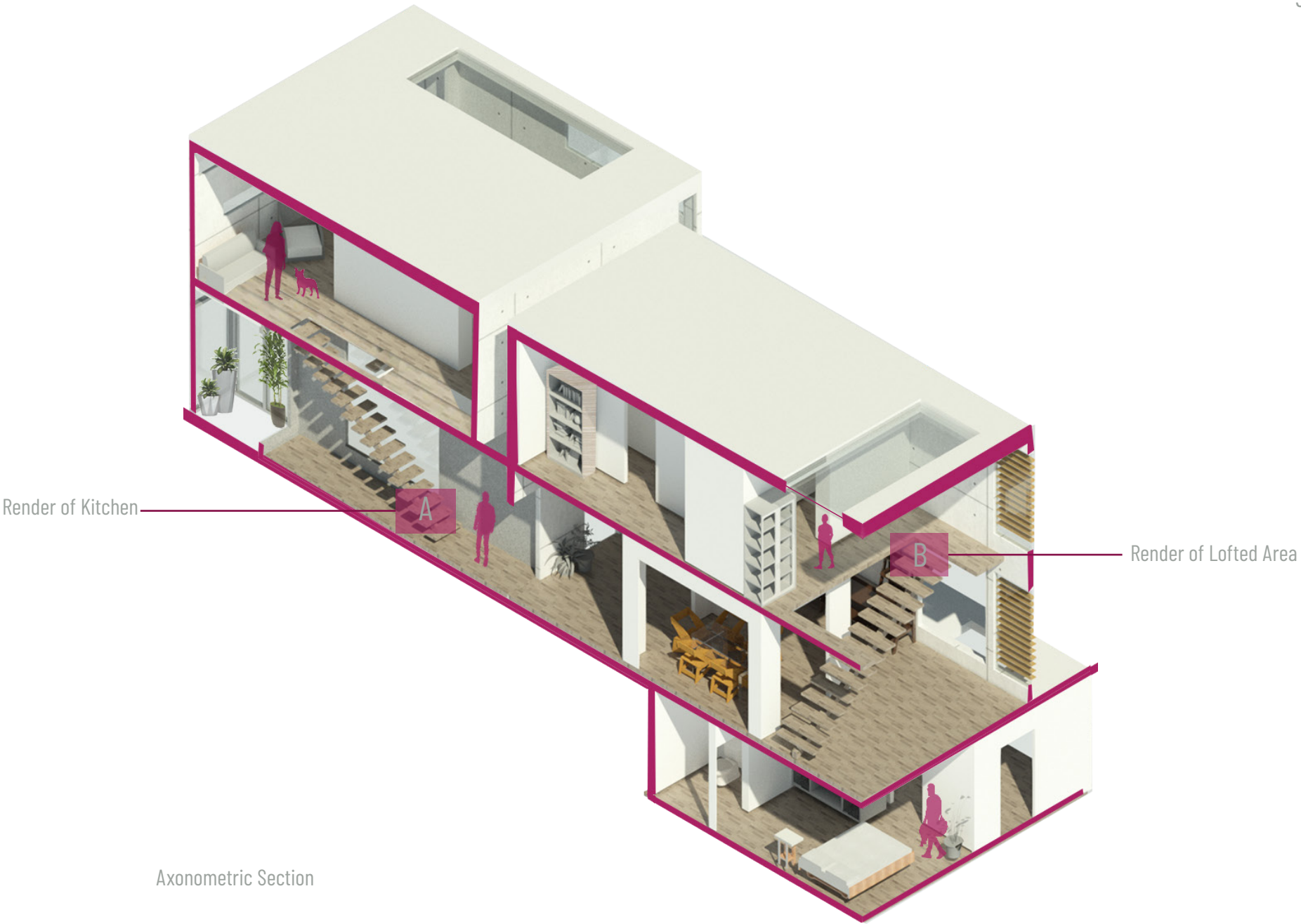
West Elevation





### MUI HAUS

Designed to fit the cultural background of the Mui Family and their needs, the Mui Haus emphasizes modularity and the fluidity of spaces within a home. The notion behind having no distinction between public and private program is expressed in the Mui Haus and follows a traditional yet modern approach to the standard typology of programmatic sequences of spaces within a home.



Render of Kitchen

A

B

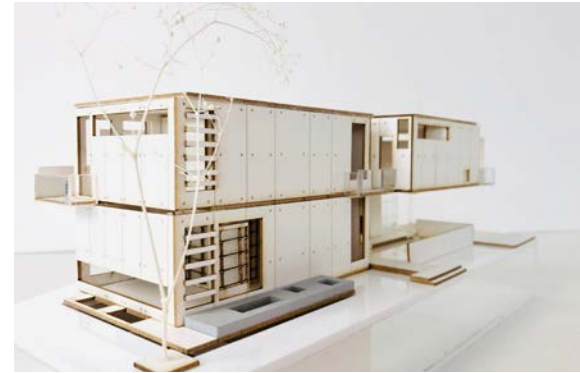
Render of Lofted Area

Axonometric Section





Exterior of Final Model







"I THINK ARCHITECTURE BECOMES INTERESTING WHEN IT HAS A DOUBLE CHARACTER, THAT IS, WHEN IT IS  
AS SIMPLE AS POSSIBLE BUT, AT THE SAME TIME AS COMPLEX AS POSSIBLE"  
TADA O ANDO