



KENNESAW STATE
UNIVERSITY

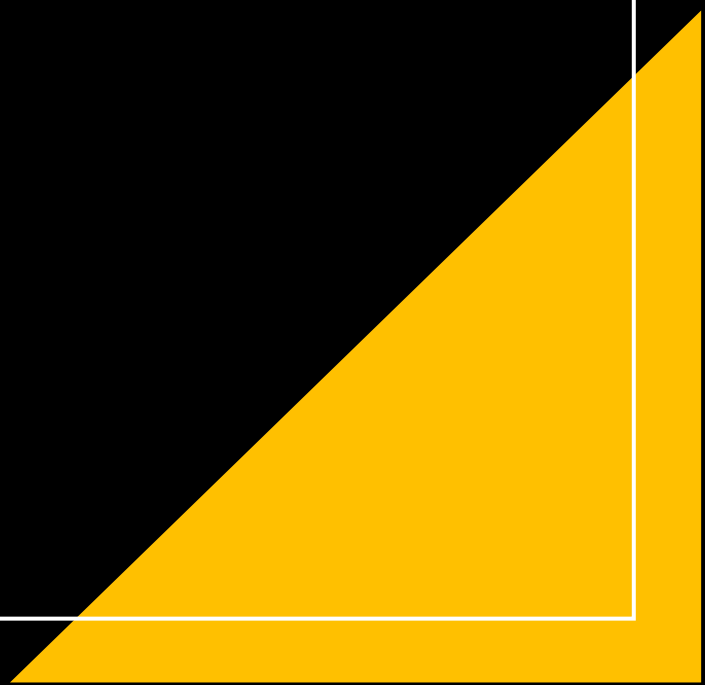
2024
Retirement
Ceremony

Karen McDonnell

Vice President of Human Resources, CHRO

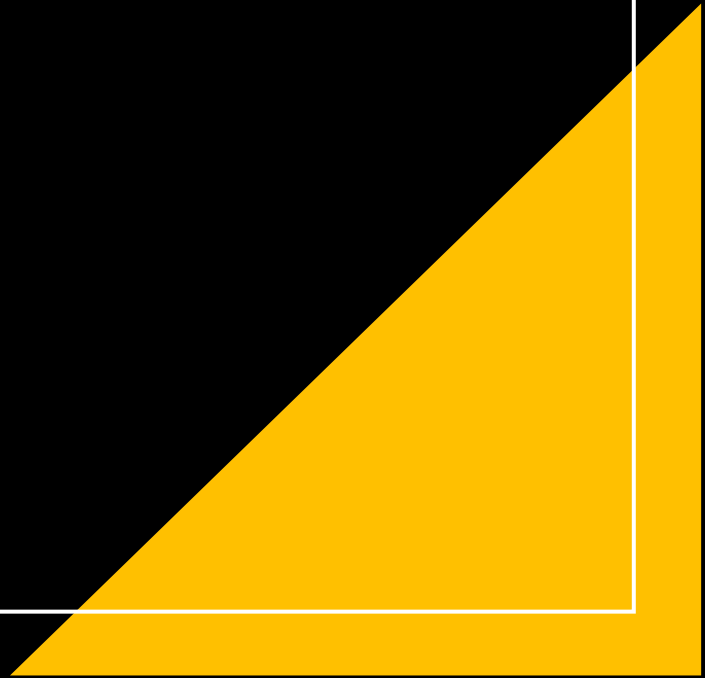
Dr. Kathy Schwaig

President, Kennesaw State University



Amy Phillips

Deputy CHRO, HR Operations



Dear Retirees

- Please remain seated during the words of appreciation
- Then, join President Schwaig down front for a picture and to receive your gift



READ THE SLOGAN.



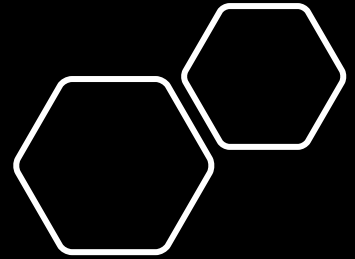
KNOW THE PRODUCT?



SHOUT IT OUT!

“Once you pop,
the fun don't stop”

1990s Advertising Slogans



“I want my baby
back ribs”

1990s Advertising Slogans



chili's

Matthew Wilson

- 27 years of service to Kennesaw State University
- Department of Geography and Anthropology
- Founding faculty of the 1998 BS in Surveying and Mapping as part of Civil Engineering Technology at Southern Polytechnic State University
- Promoted to full professor in 2006; Registered Land Surveyor 2728 (RLS) in the state of Georgia since 1996
- Taught 141 sections of 26 different classes over his career impacting thousands of students
- In fall of 2020, helped with the consolidation of Southern Poly and KSU by merging the BS in Surveying and Mapping with the BS in GIS to become the BS in Geospatial Sciences (GSS)






Dan Paracka

- 26 years of service to Kennesaw State University (31 USG)
- Interdisciplinary Studies Department
- As Director of Education Abroad helped establish KSU's first study abroad in Italy, Africa, and Asia, and the Global Learning Scholarship
- As Director of Campus Internationalization coordinated KSU's award winning Annual Country Study Program and served as Editor of KSU's Journal of Global Initiatives
- PI or Co-PI for grants and awards from: the Stevens Initiative, Institute of International Education, Institute of Turkish Studies, Japan Foundation, Korea Foundation, Georgia Humanities Council, NAFSA: Association of International Educators, Sultan Qaboos Cultural Center, United States Department of State, American Council on Education, American Association of State Colleges and Universities, and U.S. Summit & Initiative for Global Citizen Diplomacy
- Served as Coordinator of Religious Studies and Peace Corps Prep Advisor

“Dangerously Cheesy”

1990s Advertising Slogans



DANGEROUSLY
CHEESY

Cheetos



“Just for the taste of it”

1990s Advertising Slogans

Diet
COKE®





David Baugher

- 25 years of service to Kennesaw State University
- Graduate College historian and data wizard
- Able to make magic with numbers
- Always happy to help with a smile

Model 2

$F1 \rightarrow F2$

$Sp1 \rightarrow Sp2$

$Su1 \rightarrow Su2$

then group in A4

59
43

Dr. Linda Lyons

- 25 years of service to Kennesaw State University
- Director, Strategic Outreach and Initiatives, 2018-2023
- Chancellor's Learning Scholar 2019-2021
- Director, First Year Global Fellows Program, 2017-2019
- Director of Strategic Initiatives, 2013-2018
- Interim Chief Diversity Officer, 2010-2012
- Director, Training and Professional Development, Center for University Learning, 2005-2012



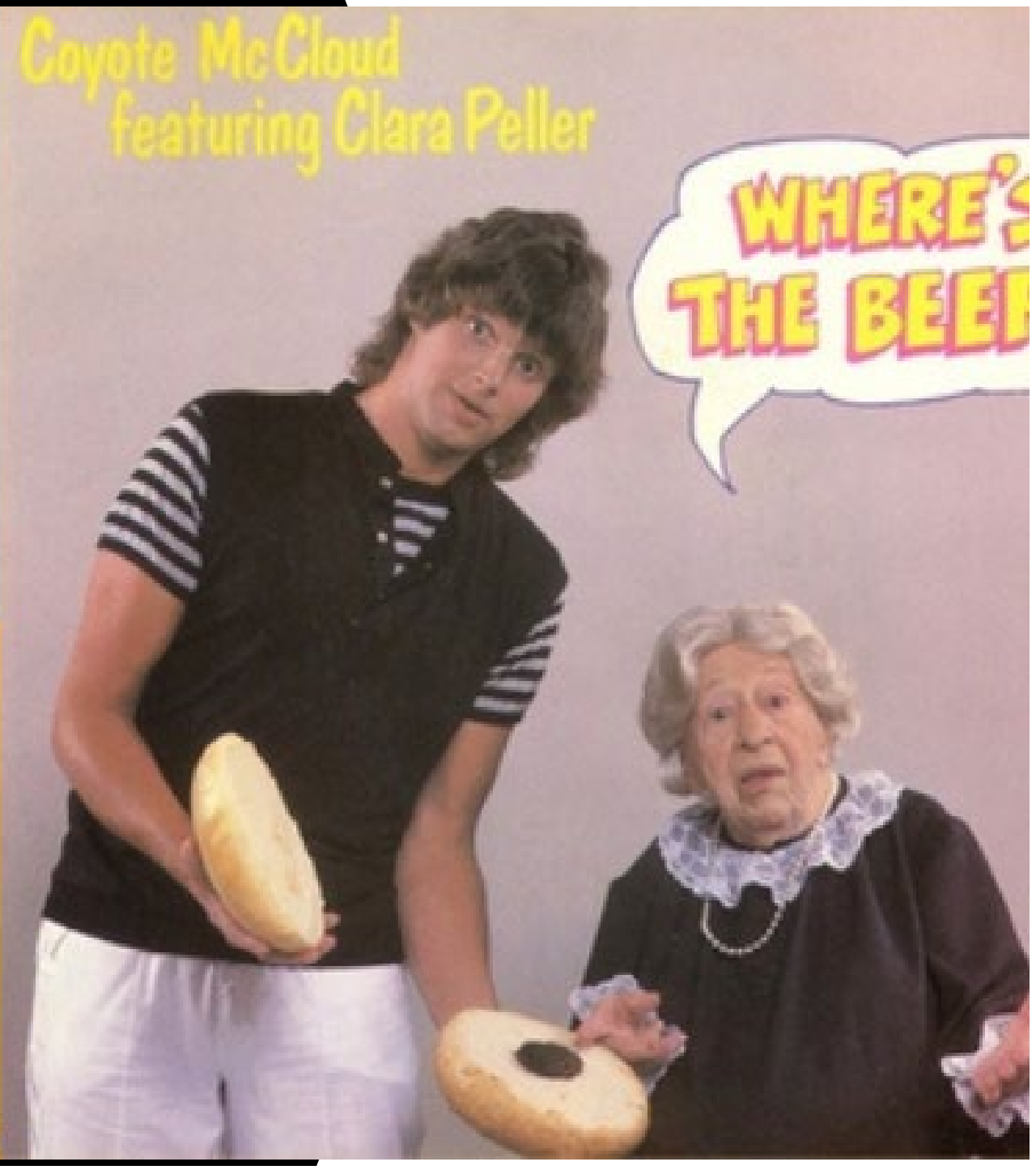
Paula Bridges

- 24 years of service to Kennesaw State University
- Accounts Payable, Office of Fiscal Services
- Paula consistently exhibited the highest level of professionalism, reliability, and job knowledge.
- Paula excelled in her service to the Campus community, and her example and expertise has fostered a culture of continuous improvement within her OFS Team.
- Paula's cheerful personality lit up every room and made Team meetings fun and engaging.
- During Paula's time with KSU, many people have come and gone but Paula remained the steadfast constant in the department, welcoming each new-comer with enthusiasm.



“Where’s the beef?”

1990s Advertising Slogans



Coyote McCloud
featuring Clara Peller

The Wendy's logo is on the left, featuring a red and white design with a circular emblem containing a girl's face. Below the logo, the text "OLD FASHIONED HAMBURGERS." is written in black on a yellow background. To the right of the logo, the slogan "Where's the Beef?" is written in a large, red, cursive font on a yellow background. In the bottom right corner, there is a small copyright notice: "© 1984 Wendy's Old Fashioned Hamburgers, Inc. All rights reserved." and a small graphic of a hamburger.

“You’ve got mail”

2000s Advertising Slogans



Dr. Daniel Sachs

- 22 years of service to Kennesaw State University
- School of Art and Design
- Associate Professor of Art History
- Helped develop the Art History program at KSU
- A superlative teacher; students loved taking his classes, as he was an exceptional storyteller.
- He taught in many summer programs at our Montepulciano campus in Italy.





Patsy Lai

- 22 years of service to Kennesaw State University
- Office of Fiscal Services – Bursar’s Office
- Patsy has served her 22 years of service at KSU in Fiscal Services Payroll Office and Bursar’s Office.
- Patsy implemented detailed processes within the Bursar’s Office related to our cashiering functions. These detailed processes helped KSU survive many financial audits.
- Patsy was a major contributor during the KSU/SPSU consolidation for the cashiering functions across both campuses.
- Patsy is the best office party planner.



Dr. Harriet Bessette

- 22 years of service at Bagwell College of Education
- Inclusive Education department
- Described as a calm leader, thorough and reflective work, and a true scholar. Other descriptive words include grace, dignity, professionalism, kindness, and empathy
- Co-edited the book *Utilizing Visual Representation in Educational Research* with Camille Sutton-Brown that was published in December 2023
- Relunched the Ed.S. program in 2022 with 36 students in the first cohort

Sandra Cobb



- 20 years of service to Kennesaw State University
- Retiring from Community and Professional Education
- Sandra's level of institutional knowledge and resourcefulness will truly be missed here at CPE. Sandra has been a wealth of knowledge on contracts, legal questions, and finance. If she does not have the answer, she knows where to get it. She always knows what needs to be renewed and when it needs to be renewed. Her ability to track and maintain contracts has been truly invaluable to CPE. Her financial and contract knowledge will leave a big hole here at CPE.
- Sandra is one of a kind! She has helped hold things together for CPE like "glue" in the Finance Department. Her high standards and ethics regarding our revenue and budget have kept us on track. As a p-card holder, I have appreciated her patience and diligence (and careful eye).
- Sandra's contributions to CPE have been nothing short of extraordinary. Her dedication, expertise, and commitment have played a crucial role in shaping the success and growth of CPE over the years. Through her leadership and hard work, Sandra has not only managed our operations with precision but has also been a mentor and friend to many of us, guiding and inspiring us every step of the way.
- One of Sandra's greatest skills is her attention to detail.

“I’m lovin’ it”

2000s Advertising Slogans



i'm lovin' it™



“Guess what day it is;
Guess what day it is; It’s
Hump Day!”

2000s Advertising Slogans

GEICO®



Dr. Mark Kremer

- 19 years of service to Kennesaw State University
- School of Government and International Affairs (SGIA)
- Co-director of the Honors Great Books Program
- Directed Great Books program in Montepulciano, Italy for seven years
- Published three books while at KSU
- Wonderful colleague, great friend - it was a terrible loss for KSU students to lose him as a teacher



Florence Farley



- 19 years of service to Kennesaw State University
- Fiscal Services - Payroll
- Florence also worked in HR and Benefits at KSU.
- This marks the end of an era as we bid farewell to Florence, who has been an invaluable asset to our team for 19 years. Her dedication, hard work, and positive attitude have left an indelible mark on all of us. As she embarks on this new journey, her contributions will be remembered and cherished.
- Thank you, Florence, for everything you have done and may your retirement be filled with joy, relaxation, and happy memories!

Cheryl Shinall

- 19 years of service to Kennesaw State University
- Lecturer in the Department of Technical Communication and Interactive Design
- She taught part-time as she transitioned in her career. Excited when offered to move into full-time work at her alma mater!
- Former students penned a compassionate story in The Sentinel to honor Cheryl as she was battling breast cancer during that time.
- Represented KSU in the Governor's Teaching Fellowship program.
- She instills in her students to live life to the fullest and give their best to achieve their personal, academic and career goals.

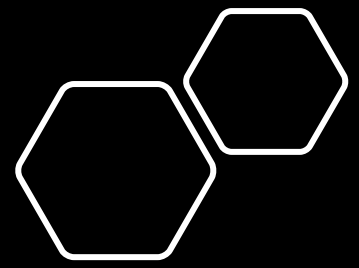


“Five-Dollar Footlong”

2000s Advertising Slogans



Black Forest Ham • BLT • Spicy Italian
Cold Cut Combo • Meatball Marinara • Tuna
Veggie Delite® • Oven Roasted Chicken Breast



Jayne Rogers

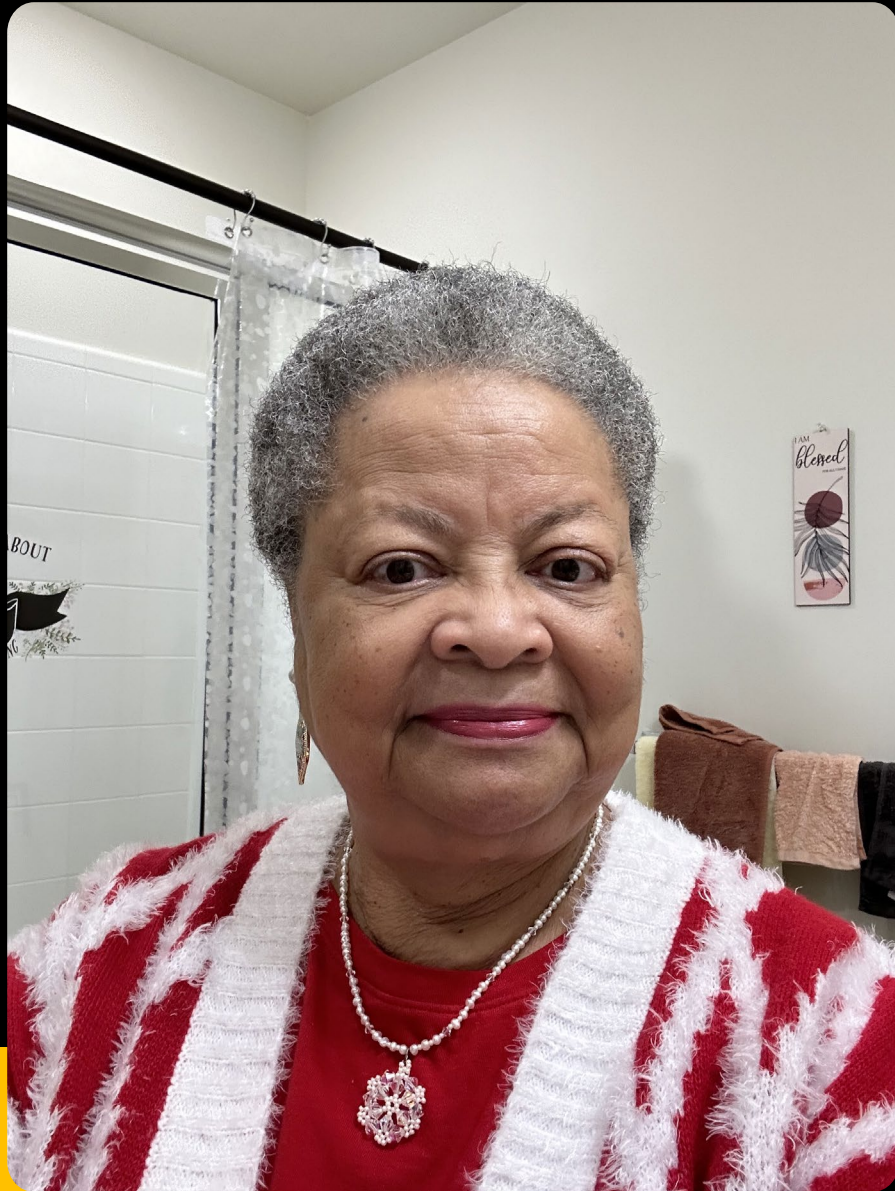
- 17 years of service to Kennesaw State University
- Kennesaw State University Foundation
- Caretaker of our donations and bank accounts for the past 10 yrs. She always makes sure the mail is delivered and checks are deposited timely.
- She successfully managed Positive Pay for our bank accounts preventing numerous attempts of check fraud on our accounts.
- I always knew when Jayne was out of the office because someone would have to get Kathy's folder out of the safe.
- Has always been an integral part of our annual audit preparation and working with the auditors to provide them what they need
- She has always been a dependable employee and one that I can count on to get something done.
- She is a prayer warrior, loving, caring, uplifting, advice giver, and most of all a great friend.





Judy Barnes

- 15 years of service to Kennesaw State University
- New Student Programs, Enrollment Services
- Served as the Office Manager for New Student Programs
- Judy was one of the first people new students met at KSU during their KSU orientation session. Her work directly impacted the student experience, and she was known around campus as the go to person for orientation logistics. She also led our student assistant team and truly loved developing student leaders and helping them reach their goals. Our team loved working with Judy, and we will miss seeing her on orientation days!



Shirley (Imani) Mwangi-Davis

- 15 years of service
- Undergraduate Admissions
- Imani's co-workers describe her as friendly, out-going, funny, a team player, honest, and dependable.
- One of Imani's greatest skills is flexibility. She has been through several business practice changes and has conquered them with little disruption in work performance.
- A challenge Imani was able to overcome was learning new technology. She overcame that challenge due to constant software upgrades and new software installations. With proper training and documentation, she was able to adapt to software changes quickly.
- As Imani's supervisor, I appreciate her being a team player. She is always willing to help wherever she is needed and at the end of the day she will make sure all the documents are caught up.



Molenda Elem

- 14 years of service to Kennesaw State University
- Office of Fiscal Services – Bursar’s Office
- Molenda served all 14 years of service in the Bursar’s Office.
- Molenda is extremely gifted with providing excellent customer service to our students.
- Molenda always displayed a pleasant demeanor.
- Molenda’s years of experience made her the “go to” person for any student account issues for the Bursar’s Office.

“877-CASH-NOW”

2000s Advertising Slogans

J.G. Wentworth



Caritina Salgado

- 13 years of service to Kennesaw State University
- Facilities – Building Services Department
- Caritina served the USG for 20 years (SPSU & KSU) with hard work, dedication, and dependability.
- Caritina ensured her responsibilities were handled with precision and delivered superior customer service.
- As a leader, Caritina was always ready to lend a helping hand, supporting and motivating her team and colleagues.
- Caritina took pride in managing her assigned zone on campus, particularly in maintaining the Jolley Lodge, with her dedication to excellence.



Diana Baughman

MSN, RN

- 12 years of service at KSU – March 2012 through May 2024
- WellStar School of Nursing
- Clinical Assistant Professor of Nursing
- Lab Coordinator
- Created Mock Competency Assessments for Skills Lab Courses
- Published Article “Implementation of Mock Competency Skill Assessments to Improve Student Outcomes” – Nurse Educator Journal Vol. 40, No. 6, 2015





Melea Benavides

- 11 years of service at Kennesaw State University
- Worked at Counseling and Psychological Services
- She has helped many students that came to the KSU Counseling Department for help.
- She has worked at both campuses.
- She trained many student workers.
- She creates fantastic desserts.

“Be like Mike”

2000s Advertising Slogans

BE LIKE MIKE



LIMITED EDITION  32oz. BOTTLES



Judith Cole

- 11 years of full-time service to KSU in the Dr. Bobbie Bailey School of Music
- Judy was featured as a soloist this year with the KSU Symphony Orchestra performing the Concerto for Piano and Orchestra by Florence Price.
- Judy was a pianist for countless KSU Opera Theater and Musical Theater performances ranging from Mozart's *Le nozze di Figaro* to *Into the Woods*.
- She taught accompanying, piano lessons, class piano, music theory, aural skills, and music theory for musical theater majors, and performed as a collaborative pianist for hundreds of students, faculty, and guest artist recitals over the past 16 years.
- Judy is an expert performer in musical theater pit orchestras and is frequently heard at the Fox Theater, City Springs Theater, and many other venues, as well as for services at The Temple in Atlanta.





George Johnson

- 11 years of service to Kennesaw State University
- Central Receiving and Distribution
- George began working at KSU in Building Services and later transferred to Central Receiving and Distribution.
- One of George's greatest skill was his adaptability. George adapted well to new team members and numerous changes during his time in Central Receiving and Distribution.
- George's quiet demeanor and quick wit will be remembered amongst his colleagues and his skills and insightfulness have inspired the next team of Service Crew members.
- George was the kind of team member that supervisors want and need. He was reliable, hard working, and a leader that could be depended on to get the job done.

“What’s In Your
Wallet?”

2000s Advertising Slogans

CapitalOne

**50%
MORE
CASH**





Paul "Dave" Peeples

- 11 years of service to Kennesaw State University
- Department of Construction Management
- Increased shop utilization by Architecture students to nearly 100%
- Led \$400,000 equipment upgrade
- Expanded labs to include 3D Printing & Digital Fabrication
- Supported numerous student competition teams – Concrete Canoe, Autonomous Underwater Vehicle, National Association of Home Builders, and various Pumpkin Launch Teams
- Coordinated IFMA Student Chapter

Leslie Hankey, PhD

- 10 years of service to Kennesaw State University
- Lecturer in the Department of Technical Communication and Interactive Design
- Her collaborative work with Ana Terry, the New Zealand Fulbright Scholar, helped her gain the confidence to consider PhD programs.
- Collaborative work with the Indus Valley School of Art & Architecture inspired her educational journey. Dr. Hussein Abaza, Dr. Laura Palmer and Professor Donna Colbeck were integral to her success in the worked funded by the grant.
- Research conducted as part of her doctoral program made her a better teacher; earning her PhD in 2021. She gratefully acknowledges Dr. Laura Palmer and Dr. Michael Lahey for their encouragement and support.
- She loves her students and meeting them in their educational journeys.





KENNESAW STATE
UNIVERSITY

**Congratulations
to our retirees!**